

# V<sup>DC PUMPS</sup> VANTAGE 60



## EN. DC fuel transfer pumps.

The brand new DC pump for fuel transfer features an innovative design and compact size. It integrates a new level of intelligence that allows the pump to monitor its operation and performance.

### Technical features:

Vane pump with rotor. Inlets / outlets with hose end-fitting. Ready for direct connection to the level switch.

LED for monitoring the operation status.

Local file with memory events.

## ES. Bombas de transferencia de combustible de corriente DC.

Bomba de corriente continua para la transferencia de combustible, ofrece un diseño innovador y compacto. Integrada con una nueva inteligencia que permite que la bomba de monitoree las operaciones y que permite monitorizar su actividad y funcionamiento.

### Características técnicas:

- Bomba de paletas con rotor.

- Entradas/salidas con boquilla.

- Preinstalación para conexión directa al interruptor de nivel.

- LED para la monitorización del estado operativo.

- Archivo local con memoria de eventos.

## PT. Bombas de transferência de combustível de corrente contínua.

A novíssima bomba de corrente contínua para transferência de combustível, que proporciona grandes inovações em termos de design e de tamanho compacto, acrescentando um novo nível de inteligência para a bomba que possibilita monitoração da própria atividade e dos desempenhos.

### Características técnicas:

Bomba de palhetas com rotor.

Entradas/saídas com porta mangueira.

Predisposição para ligação direta a interruptor de nível. LED para monitoração do estado operacional. Arquivo local com histórico de eventos.

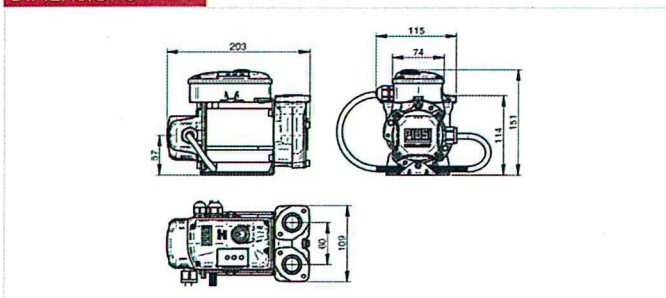
## PERFORMANCE

- Flow rate up to 60 l/min
- 12 - 24 V DC operation
- Noise level below 70 dB

- Caudal hasta 60 l/min
- Funcionamiento 12V - 24V CC
- Nivel de ruido inferior a 70 dB

- Caudal até 60 l/min
- Funcionamento 12 - 24 V DC
- Ruído inferior a 70 dB

## DIMENSIONS



## GUARANTEE

**IP 55**

IP Protection Guaranteed

**Guaranteed IP55 protection**  
Prevents water and dust entering the motor.



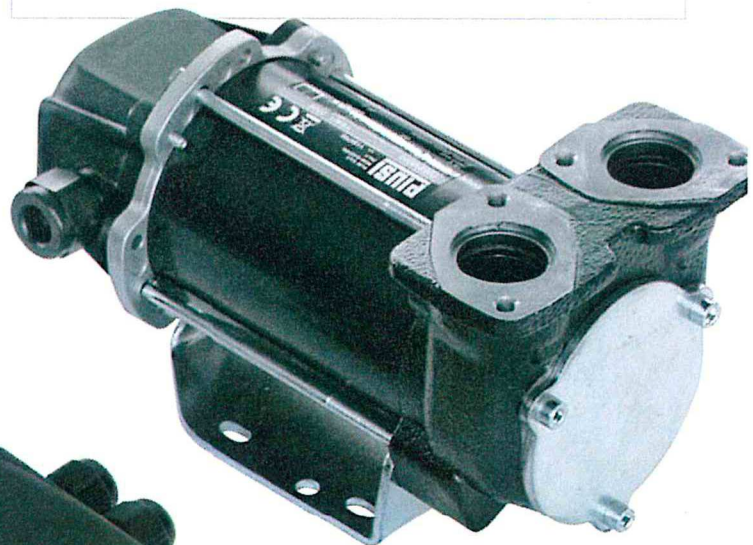
**EMC Test**  
No interference with power circuits.



**Vibration Test**  
Able to resist high vibrations.

## PRODUCTS' RANGE WEIGHT AND PACKAGING

Code	Weight		Packaging		
	kg	lbs	mm	inch	pcs/box
F0033700A	4,3	9,1	230x160x160	9,1x6,3x6,3	1
F0033801A	4,3	9,1	230x160x160	9,1x6,3x6,3	1

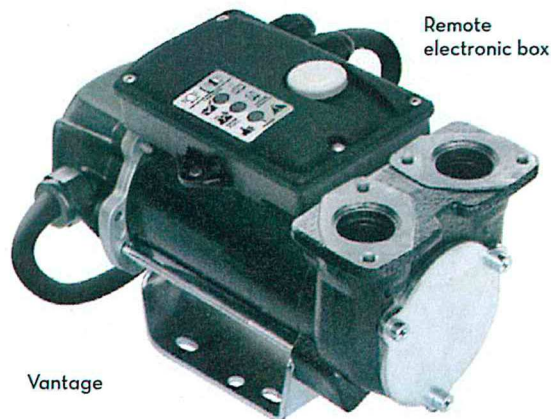


**REGISTERED DESIGN**

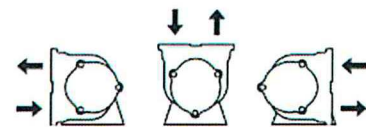
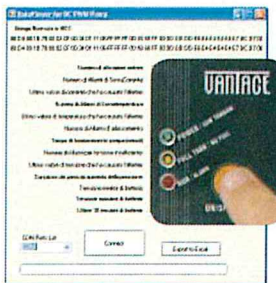
**PATENTED**

PUMPS

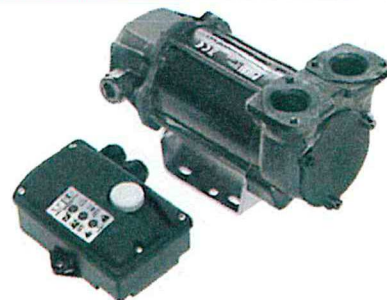
**Flow-rate**  
up to  
**60 l/min**  
(up to 15,9 gpm)



**PC interface**



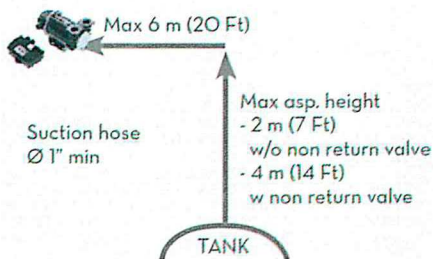
**ON REQUEST** REFUELLING OFF ROAD VEHICLES



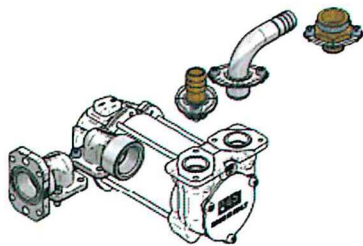
**EN.** Versions compatible with B20 fuel and Tier 4 engines available

**ES.** Versiones compatibles disponibles con carburante B20 y motores Tier 4

**PT.** Disponíveis versões compatíveis com combustível B20 e motores Tier 4



**ON REQUEST** CHOICE YOUR BEST CONNECTIONS



Kit straight hose tail 3/4":  
Code F16172000  
(No.02 pcs)  
1": Code F17124000  
(No.02 pcs)



90° hose tail 3/4": Code F16173000  
(No.01 pcs)  
1": Code F17262000  
(No.01 pcs)



Flanged elbow Code F16178000  
(No.01 pcs)  
Elbow Code F16770000  
(No.01 pcs)



Flanged adaptor (No.01 pcs)  
1" BSP F: F16799000  
3/4" BSP F: F17314000  
1" BSP M: F17313000

**PRODUCTS' RANGE** TECHNICAL DATA

Code	Description	Fluids type	Flow-rate		Voltage			rpm	Duty cycle min.	Max working pressure bar.
			l/min	gpm	DC Volt	Power Watt	Amp. max.			
F0033700A	VANTAGE 60	D	60	15,9	12	300	24	2900	30	1,5
F0033801A	VANTAGE 60	D	60	15,9	24	310	13	2900	30	1,5