

S. A. M. P. I.

METERING EXPERTS



METERING SOLUTIONS FOR

TANKER TRUCKS

www.sampi.it

An international group

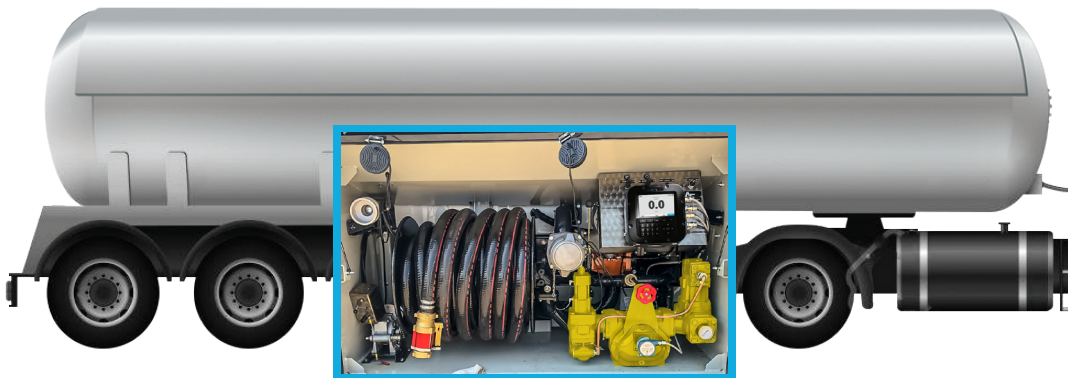
Sampi truck solutions combine the industry's premier meters, pumps and control components with operator-friendly mechanical registers or electronic flow computers. Accuracy and reliability are the keys to success of Sampi in tanker truck business. Thanks to dedicated research and development teams, Sampi is leading product evolution in the market, always looking for the complete fulfillment of the needs of its customers. Being part of the IDEX Energy since 2002, Sampi gets also access to the state of the art products and technologies of brands like Liquid Controls and

Corken. This means also that, by matching components from our proprietary range of products, our customers can create a custody transfer solution ideally suited to their fleet.

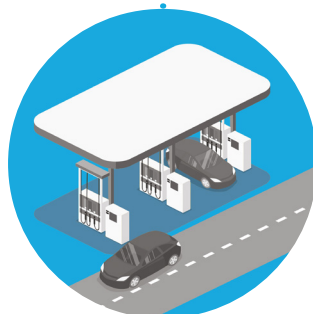


THAT OFFERS YOU A COMPLETE CUSTODY TRANSFER SOLUTION

Sampi wide portfolio allows to create fully equipped delivering systems for the measurement, pumping and control of fuels. All components are MID (module B, module B+F, module B+D) approved and suitable for semi-trailers, bobtails and hydrant dispensers.



RESIDENTIAL



GAS STATIONS



AVIATION



REFINED FUELS



GRAVITY METER



The gravity meter expands the traditional capabilities of positive displacement flow meters, by allowing the metering system to be utilized without pump and in combined pumped/gravity layouts. The gravity meter enables also the combined dry/wet hose applications, thus covering the full range of typical tank trucks configurations. The wide operating pressure (0.1 - 10 bar) combined with the high flow rates available in both gravity and pumped applications (200 - 1.000 l/min) permit to gain higher efficiencies and significant reduction of the overall investment cost.



PD METERS



Positive displacement flow meters are liquid measuring instruments that maintain precise and accurate metering over long periods of operation. Simple in design and with a wide range of flow rates (25 - 1.700 l/min), M meters are widely used on truck applications all over the world.



PUMPS



RVP pumps are rotary vane type, self-priming, provided with built-in by-pass valve to protect the pump and system against overpressure. RVP pumps are made with vanes produced from advanced polymers which exhibit extremely low coefficients of friction. Due to its efficiency, Sampi RVP pumps require less horsepower than other equivalent pumps. RVP pumps are available in 2", 2,5" or 3" size with flow rates ranging from 150 to 1.000 l/min.



ACCESSORIES



Filtering, air detection (both mechanical and electronic) and elimination are vital steps to guarantee both accurate measurements and the overall system durability. Since decades, Sampi components are recognized as best options available on the market. Similar to metering components, Sampi can scale up and down the size (1,5" - 4") and performance of these components to exactly match the optimal system layout. Furthermore, a wide range of preset and shut-off valves are available to suit all typical activation principles: manual, pneumatic, electric.



SMART DEVICE + CLOUD

TEX

SMART DEVICE

READY FOR TODAY... DESIGNED FOR THE FUTURE

TEX was founded on several years of collaboration and listening of customer needs. Its compact, robust and light weight design can be fully adaptable to any specific customer requirement. Today TEX is more connected to the future than ever. It kept evolving and became much more than just an Electronic Register.



All your data
in one place!

TEX BECOMES SMART. MOVING DATA FROM LOCAL TO CLOUD



OTA Updates

7" High-contrast color display

4 installation positions

Installation made easy with 0°, 90°, 180° or 270° positioning of the rear enclosure.

Dedicated smart keys

2-Side wiring

Flexible wiring options with 10 holes distributed on 2 sides of the enclosure.

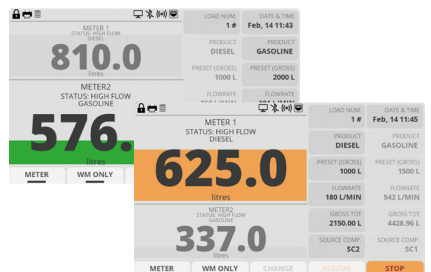
NEW INTERFACE



Advanced Status Bar

Graphical Progress of Preset Volume

Simultaneous Dual Meter Control



Customizable Display Parameters



Multiproduct Control





LIQUIFIED PETROLEUM GAS



PD METERS



MA Series meters are specifically made for metering liquified petroleum gas (LPG). They can bear pressures up to 25 bars and are available in a wide range of flow rates (225 - 760 l/min). Also in LPG applications, accuracy reaches +/- 0.05% (or better) and repeatability 0.02%.



MASS METERS



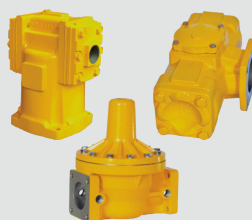
Coriolis flow meter is a valid alternative to PD flow meters when direct mass metering and density reference are required. Mass meters, like PD meters, have got a long lifetime and are reliable even in extreme environmental conditions.



PUMPS



The positive displacement, sliding-vane design of CORKEN pumps is widely spread in the LPG business because its pumping efficiencies remain high throughout the life of the pump. This sliding vane pump is unique because it can handle small amounts of vapor formed at the pump suction and the vanes are self-adjusting for wear.



ACCESSORIES



Considering the strict safety requirements of the LPG product, meter accessories require highly accurate manufacturing processes and testing procedures. From this point of view, Sampi has developed all the components over decades and decades of leading presence in the market, thus providing to its customers the best-in-class LPG accessories available today.





AFTER SALES SERVICE



For SAMPI after sales service is a priority. By means of a dedicated team, we can assist our customers with whatever is needed, so as to reduce downtime to a minimum. Being able to provide a fast and accurate assistance, is our main goal.

Focus Market



 **S.A.M.P.I. s.p.a.**
Via A. Vespucci, 1 -55011
Altopascio (LU) - Italy

 +39 0583 24751
 www.sampi.it

 info.sampi@idexcorp.com
 [/company/sampi-it](https://www.linkedin.com/company/sampi-it)



The unified platform to satisfy your after sales needs www.sampidesk.com



METERING EXPERTS

www.sampi.it

