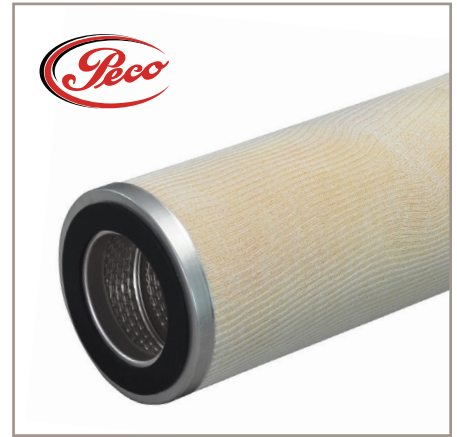


PECO Series IPC

XTREAMPHASE®

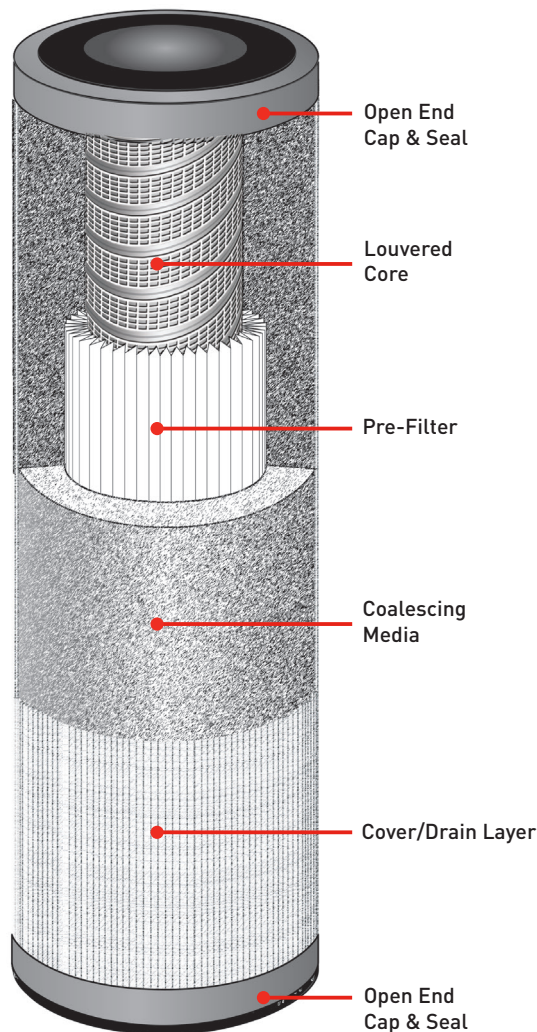
DEPTH GLASS STYLE W/ INTEGRAL PRE-FILTER
LIQUID/LIQUID PHASE COALESCERS

for use in PECO Series 110V and 110H XtreamPhase®
vessels or competitor vessels of similar design



Series IPC coalescer cartridges are used in vertical and horizontal PECO Series 110 vessels and also as a retrofit to other competitor equivalents. Its main purpose is to coalesce and separate free and entrained water from fluids such as aromatics, condensate, diesel, gasoline, kerosene, LPG and lube oil. The cartridge can also be used to remove entrained liquids other than water.

The Series IPC coalescer contains a fiberglass coalescing media, which is hydrophilic in nature, making it an excellent choice for attracting water droplets. It also contains an internal pre-filter for removing unwanted solid contaminants that can prematurely plug the coalescing media. The coalescer typically works in conjunction with the Series S separator cartridge. The separator uses a fine hydrophobic material to act as a final barrier/repellent to any stray droplets that try to migrate downstream.



HAVING AN UNWANTED IMMISCIBLE FLUID IN A PRODUCT STREAM CAN BE COSTLY.

Don't let it create maintenance issues on equipment and cause product to be off-spec. PECO coalescing and separation technologies provide solutions to improve our customers operating costs and improve product quality. Our cartridges are designed to separate a two phase liquid stream and remove the unwanted free, immiscible, dispersed droplets from the continuous fluid stream.

The word coalescence means "to grow". The coalescer media chemistry creates an affinity to attract the small immiscible liquid droplets (discontinuous phase) suspended in a fluid (continuous phase). As the small droplets are attracted they collide with each other allowing them to grow into larger droplets. The larger droplets are carried through the coalescing media and separated from the continuous fluid stream by gravity.



New & Improved Coalescing Media

- 20% increase in droplet size
- lower ppm(v) level



ENGINEERING YOUR SUCCESS.

MATERIALS

MEDIA	Inert Resin Bonded Seamless Fiberglass
PRE-FILTER	Pleated Microglass
CORE	Aluminum
OUTER COVER	Cotton Sock
END CAPS	DOE Style: Aluminum TB Style: Glass Filled Nylon
SEAL	Buna-N, Viton®
ADHESIVE	Urethane

PERFORMANCE

Coalescer Only

Removes entrained free water down to 8 ppm(v) or less with influent water concentration up to 10% volume.

Coalescer With Separator

Removes entrained free water down to 8 ppm(v) or less with influent water concentration up to 5% by volume.

- 1 micron pre-filter for solids removal

OPERATING DATA

FLOW DIRECTION: Inside-to-Outside

MAX TEMP: 240°F / 116°C

MAX. DIFFERENTIAL PRESSURE: 25 psid / 1.7 bar

RECOMMENDED CHANGE-OUT

DIFFERENTIAL PRESSURE: 15 psid / 1.0 bar

PH RANGE: 5–9

NOMINAL DIMENSIONS

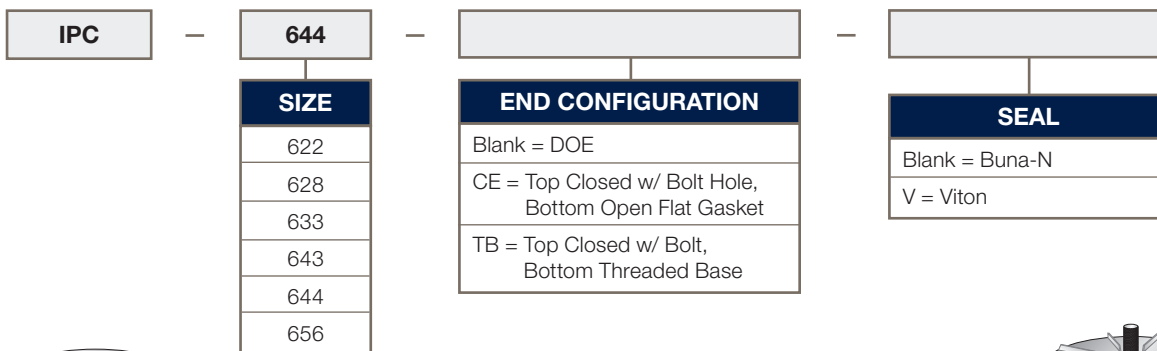
DOE STYLE (Double Open Ended)

SIZE	O.D.	I.D.	LENGTH
622	6" / 152mm	3.5" / 89mm	22.25" / 565mm
628	6" / 152mm	3.5" / 89mm	28.75" / 730mm
633	6" / 152mm	3.5" / 89mm	33.25" / 845mm
643	6" / 152mm	3.5" / 89mm	43.25" / 1099mm
644	6" / 152mm	3.5" / 89mm	44.25" / 1124mm
656	6" / 152mm	3.5" / 89mm	56.25" / 1429mm

THREADED BASE STYLE (for competitor retrofits only)

SIZE	O.D.	I.D.	LENGTH
622	6" / 152mm	3.0" / 76mm	23" / 584mm
628	6" / 152mm	3.0" / 76mm	29" / 737mm
633	6" / 152mm	3.0" / 76mm	34" / 864mm
644	6" / 152mm	3.0" / 76mm	45" / 1143mm
656	6" / 152mm	3.0" / 76mm	57" / 1448mm

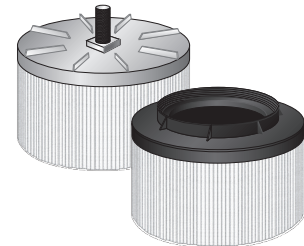
ORDERING INFORMATION



DOE = Double Open End



CE = Top Closed w/ Bolt Hole, Bottom Open Flat Gasket



TB = Top Closed w/ Bolt, Bottom Threaded Base

• Viton® is a registered trademark of E. I. du Pont de Numours and Company.

© 2019 Parker Hannifin Corporation
DS-OG-XTREAMPHASE-IPC-190702



Parker Hannifin Corporation
Industrial Process Filtration Division
Phone 940-325-2575 | Toll Free 1-800-877-7326
Email IPF_AM_TechSupport@parker.com
www.parker.com/ipf