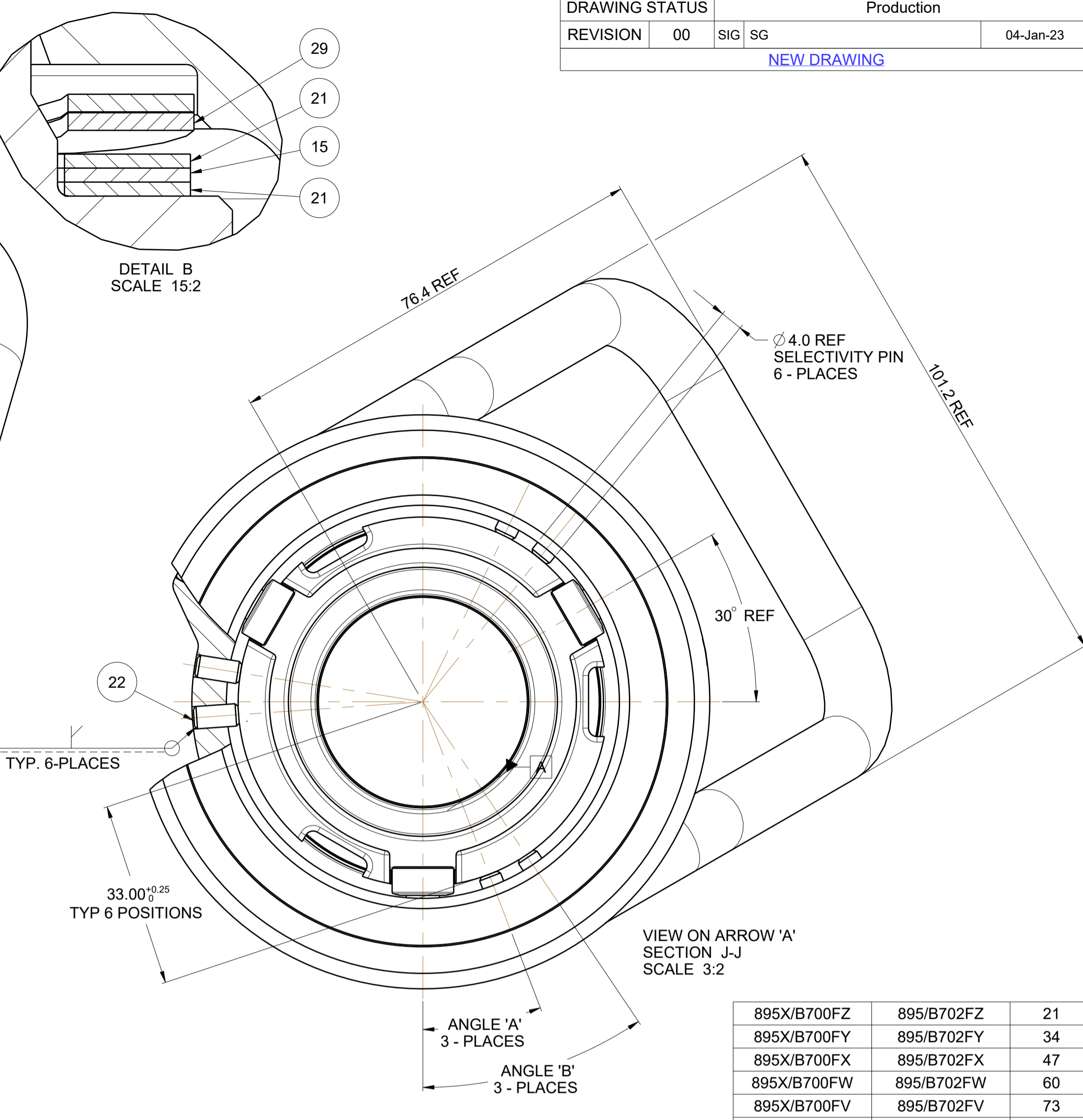
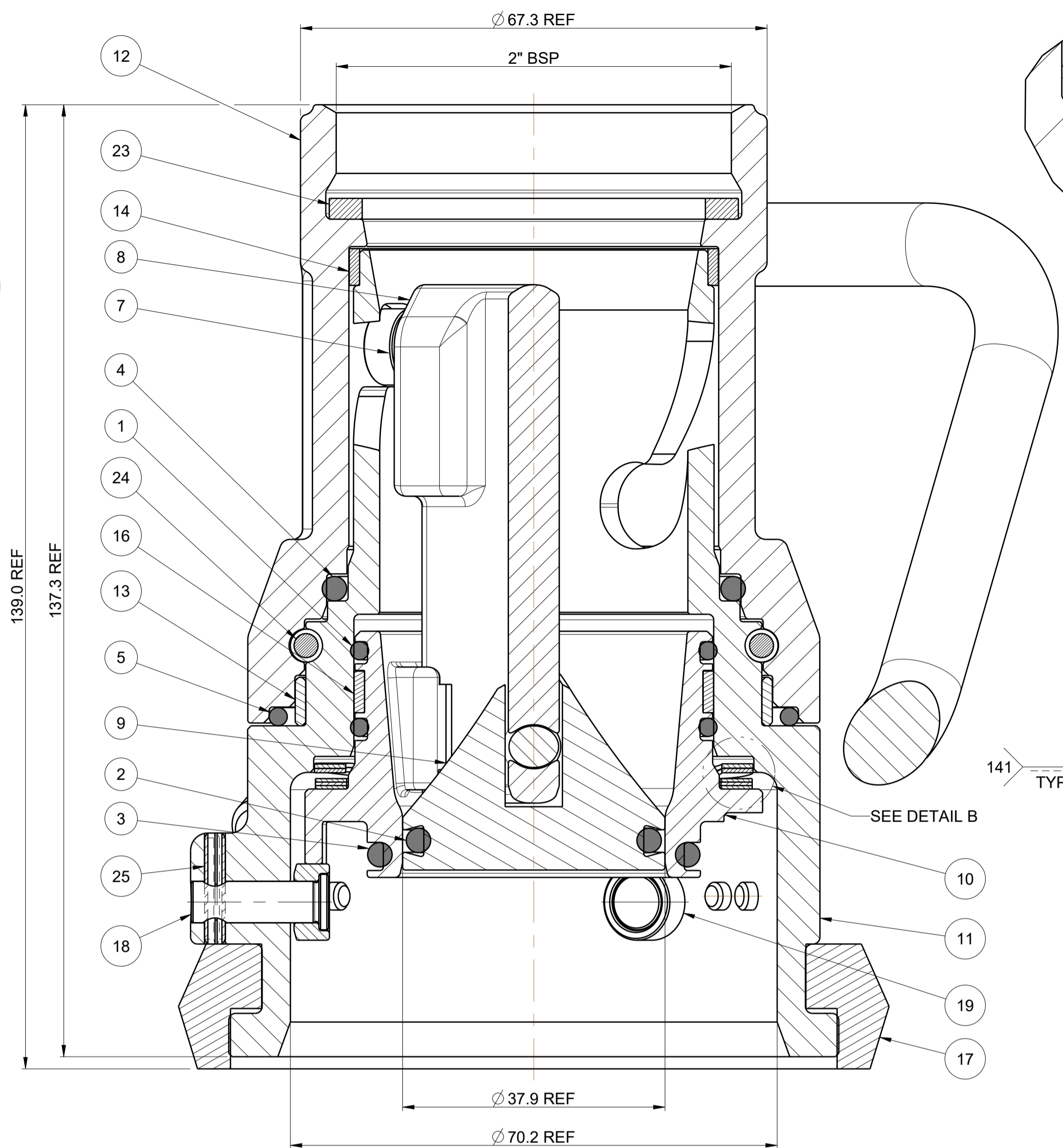
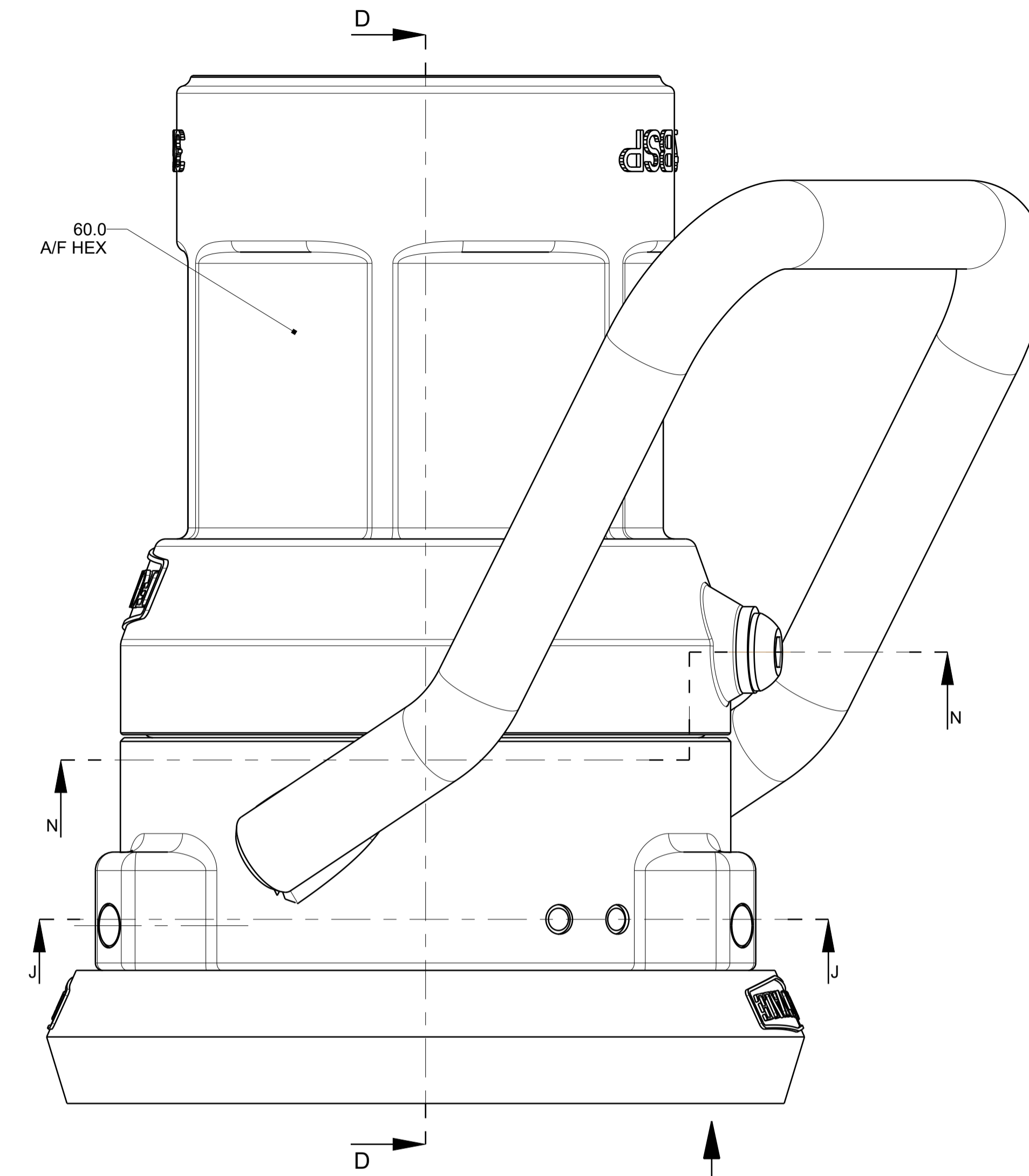
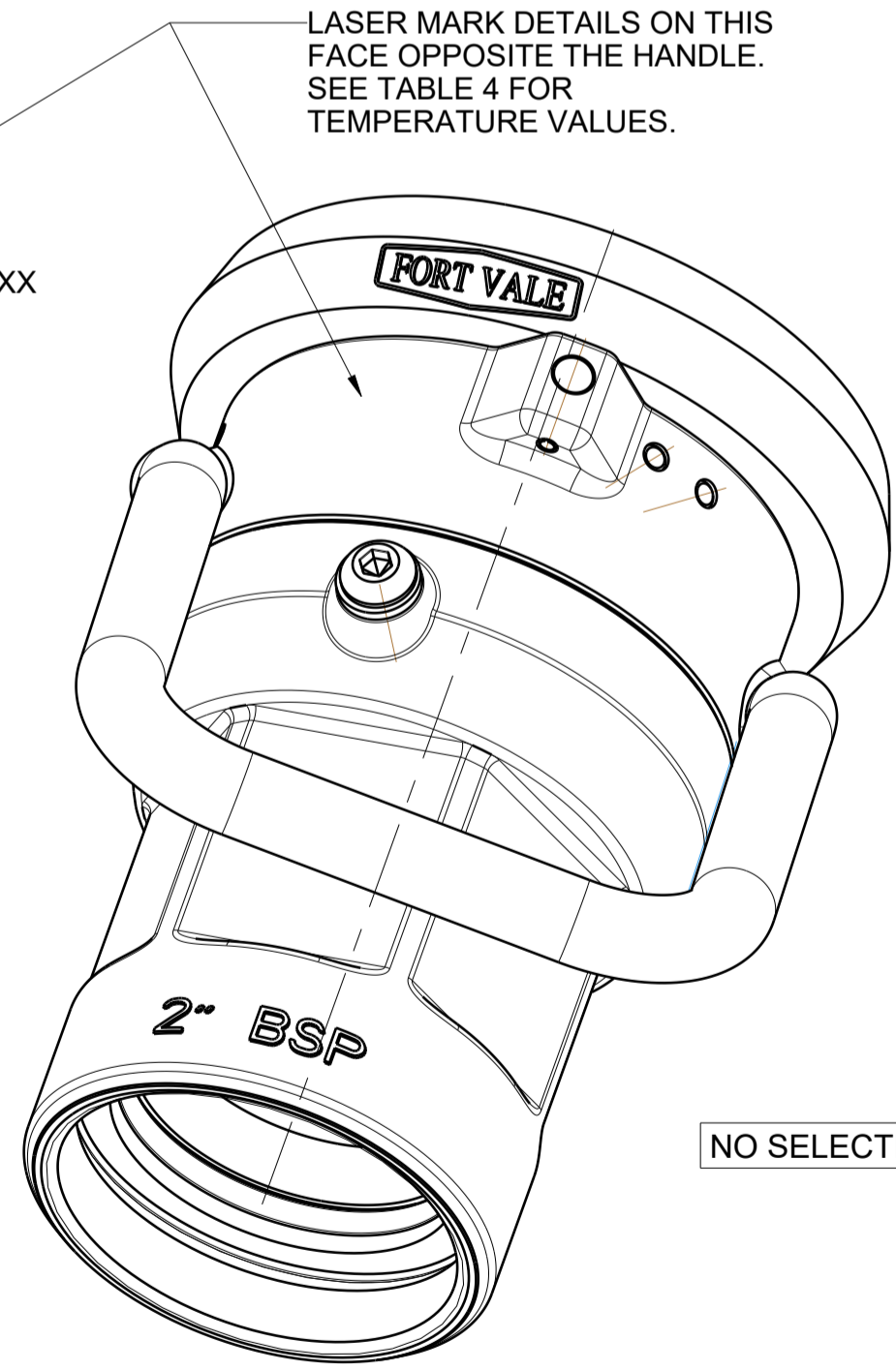
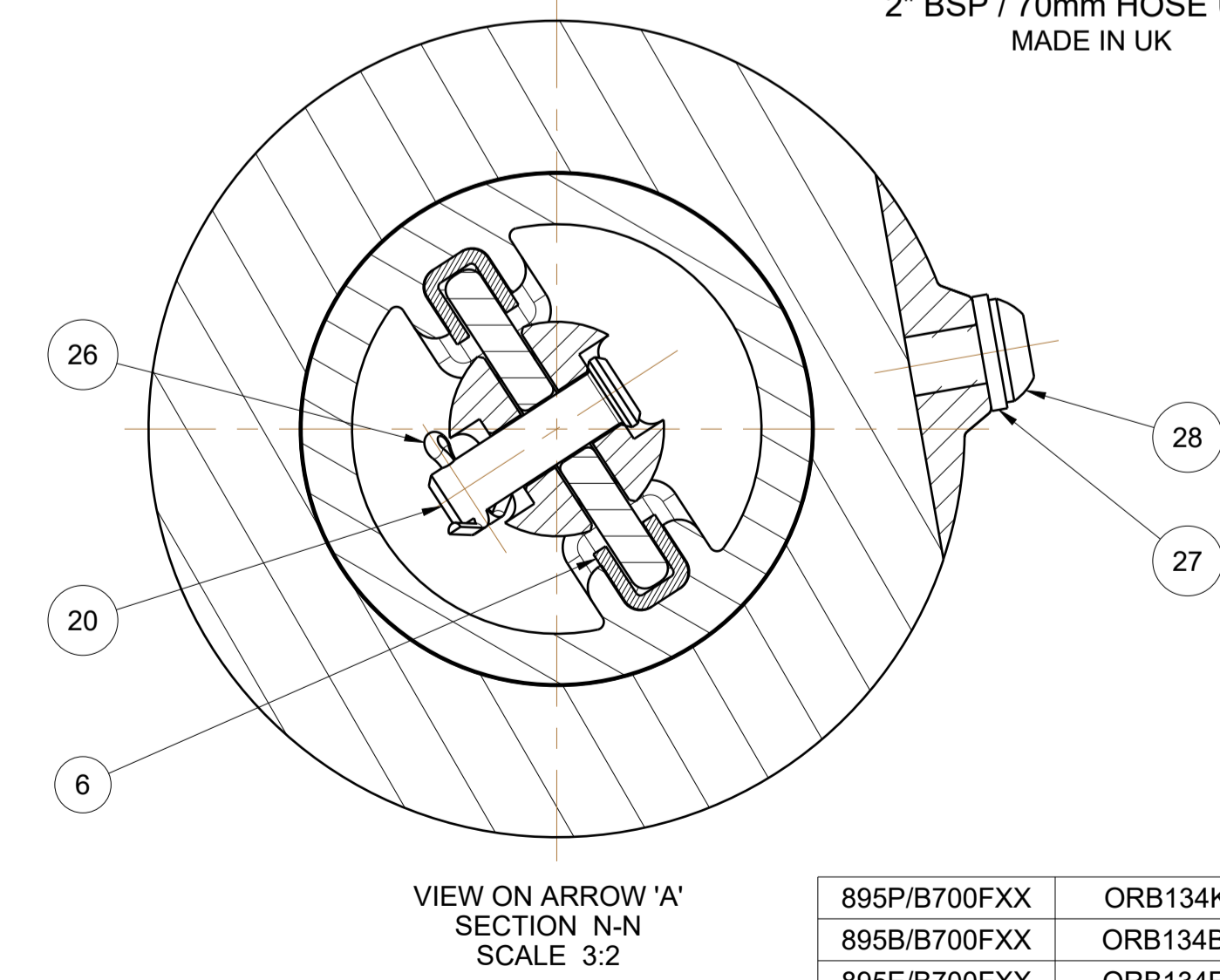
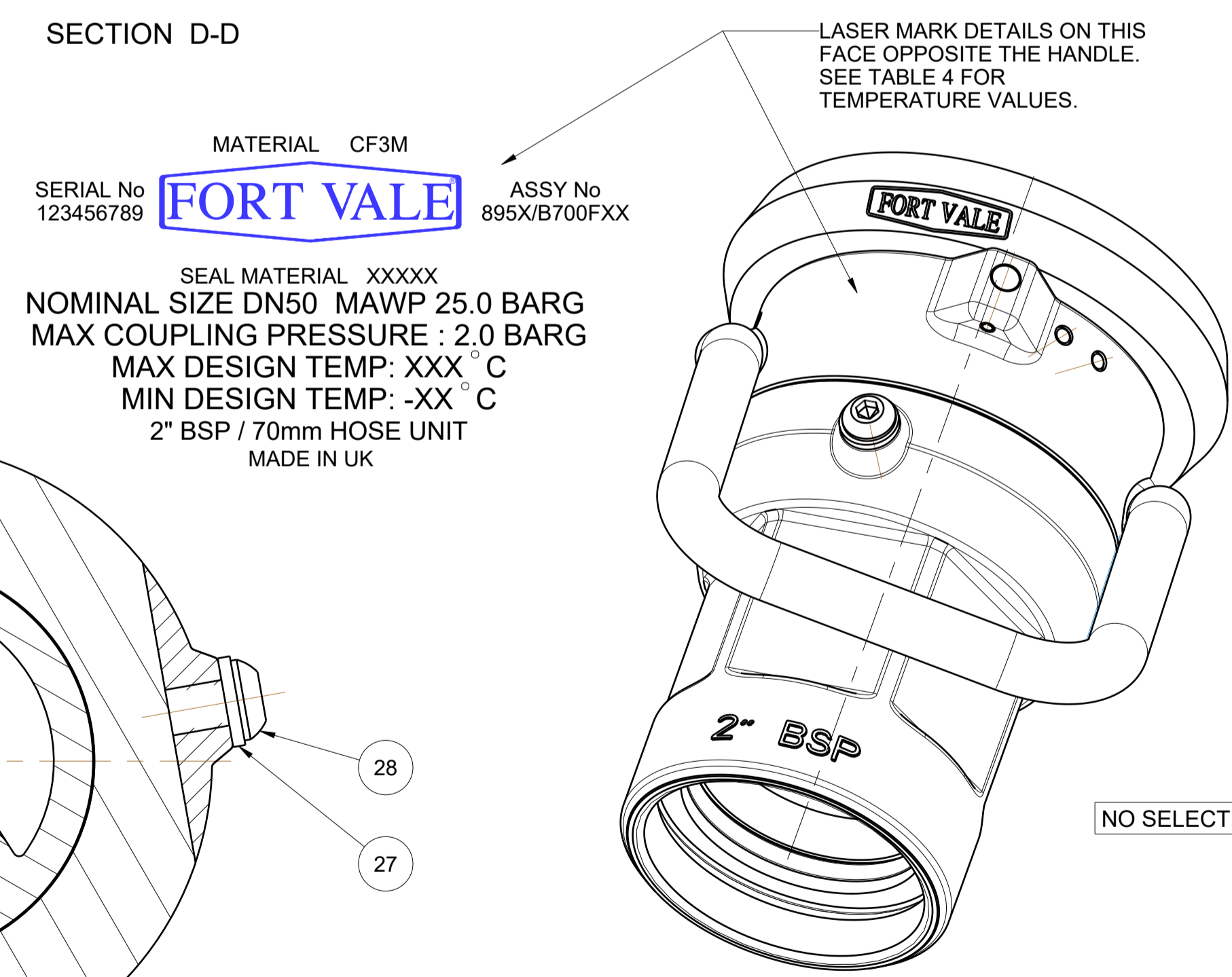


DRAWING STATUS		Production	
REVISION	00	SIG	SG
NEW DRAWING			
			04-Jan-23



**DESIGN CODES:** ASME VIII DIV1 BS EN 12516-2 2014  
**STATIC DESIGN PRESSURE (MAWP):** 25.0 BAR  
**HYDRAULIC TEST PRESSURE:** 37.5 BAR  
**MAX DESIGN TEMPERATURE:** 200 °C  
**MIN DESIGN TEMPERATURE:** -40 °C } FOR METAL PARTS  
**MAX. COUPLING PRESSURE:** 2.0 BAR  
 REFER TO TABLE 4 FOR SEAL TEMPERATURE LIMITATIONS  
 USE THESE VALUES FOR LASER MARKING

29	5104-1002	WAVE SPRING	17/7 PH	2
28	5111-610	M6x10mm BUTTON SCREW	A2-70	1
27	5113-008	M6 SPRING WASHER	304 STST	1
26	5118-012	1/16" SPLIT PIN	304/316 STST	1
25	5128-071	3.0MM X 16MM ROLL PIN	304 STST	3
24	10145SS	3/16" DIA BALL	316 STST	42
23	10450P	70MM HOSE INNER GASKET	VIRGIN PTFE	1
22	895/0001/2	SELECTIVITY PIN	304L/316L STST	6
21	895/0703/6	THRUST WASHER	316 STST	2
20	895/0705/8	6mm DIA x 20mm LONG CLEVIS PIN	316 STST	1
19	895/0707	ROLLER	NITRONIC 60	5
18	895/0707	ROLLER SPINDLE PIN	316/316L STST	3
17	895/0708/2	RUBBER BUFFER RING	VITON	1
16	895/0708/6	INNER HOUSING BEARING	RTFE	1
15	895/0708/7	THRUST BEARING	VIRGIN PTFE	1
14	895/0708/8	SCARF CUT BEARING	RTFE	1
13	895/0708/9	PLAIN BEARING	RTFE	1
12	895/B701	SWIVEL BODY MACHINED	CF3M	1
11	895/B702FXX	CAMMED BODY (SEE TABLES 1 TO 3)	CF3M	1
10	895/B700FXX	PISTON GUIDE (SEE TABLES 1 TO 3)	CF8M	1
9	895/B705/1	DUPLEX POPPET HEAD	316 STST	1
8	895/B705/5	PISTON PLATE MACHINED	CF8M	1
7	895/B705/6	PISTON SPINDLE	316 STST	2
6	895/B708/4	SLIDE STRIP	PTFE	2
5	ORB149F1	BS 149 FORTYT PFA/SILICON O RING	FORTYT	1
4	SEE TABLE 4	BS227 O RING (SEE TABLE 4)	SEE TABLE 4	1
3	SEE TABLE 4	BS223 O RING (SEE TABLE 4)	SEE TABLE 4	1
2	SEE TABLE 4	BS217 O RING (SEE TABLE 4)	SEE TABLE 4	1
1	SEE TABLE 4	BS134 O RING (SEE TABLE 4)	SEE TABLE 4	2
Index	Part Number	Description	Material	Qty



**IMPORTANT**

CARE MUST BE TAKEN AS THE SINGLE PIN SELECTIVITY HOSE UNIT FROM TABLE 3 WILL FIT ONTO THE DOUBLE SLOT TANK UNIT

895X/B700FQ	895/B702FAQ	81	95
895X/B700FP	895/B702FAP	67	95
895X/B700FN	895/B702FAN	67	81
895X/B700FM	895/B702FAM	53	95
895X/B700FL	895/B702FAL	53	81
895X/B700FK	895/B702FAK	53	67
895X/B700FJ	895/B702FAJ	39	95
895X/B700FH	895/B702FAH	39	81
895X/B700FG	895/B702FAG	39	67
895X/B700FF	895/B702FAF	39	53
895X/B700FE	895/B702FAE	25	95
895X/B700FD	895/B702FAD	25	81
895X/B700FC	895/B702FAC	25	67
895X/B700FB	895/B702FAB	25	53
895X/B700FA	895/B702FAA	25	39
895X/B700F0	895/B702F00	0	0
ASSEMBLY PART NUMBER	CAMMED BODY PART NUMBER	ANGLE 'A'	ANGLE 'B'

895X/B700FZ	895/B702FZ	21
895X/B700FY	895/B702FY	34
895X/B700FX	895/B702FX	47
895X/B700FW	895/B702FW	60
895X/B700FV	895/B702FV	73
895X/B700FU	895/B702FU	86
895X/B700FT	895/B702FT	99
ASSEMBLY PART NUMBER	CAMMED BODY PART NUMBER	ANGLE 'A'

895X/B700FYZ	895/B702FYZ	21	34
895X/B700FXZ	895/B702FXZ	21	47
895X/B700FXY	895/B702FXY	34	47
895X/B700FWZ	895/B702FWZ	21	60
895X/B700FWY	895/B702FWY	34	60
895X/B700FWX	895/B702FWX	47	60
895X/B700FVZ	895/B702FVZ	21	73
895X/B700FVY	895/B702FVY	34	73
895X/B700FVX	895/B702FVX	47	73
895X/B700FVZ	895/B702FVZ	60	73
895X/B700FUW	895/B702FUW	21	86
895X/B700FUY	895/B702FUY	34	86
895X/B700FUX	895/B702FUX	47	86
895X/B700FUW	895/B702FUW	60	86
895X/B700FUV	895/B702FUV	73	86
895X/B700FTZ	895/B702FTZ	21	99
895X/B700FTY	895/B702FTY	34	99
895X/B700FTX	895/B702FTX	47	99
895X/B700FTW	895/B702FTW	60	99
895X/B700FTV	895/B702FTV	73	99
895X/B700FTU	895/B702FTU	86	99
ASSEMBLY PART NUMBER	CAMMED BODY PART NUMBER	ANGLE 'A'	ANGLE 'B'

895P/B700FXX	ORB134K2	ORB217K2	ORB223K2	ORB227K2	PERFLUOROELASTOMER	-15° C TO 240° C
895B/B700FXX	ORB134BU	ORB217BU	ORB223BU	ORB227BU	BUTYL	-40° C TO 150° C
895E/B700FXX	ORB134EP	ORB217EP	ORB223EP	ORB227EP	EPDM	-50° C TO 150° C
895N/B700FXX	5005-125	ORB217N	ORB223N	ORB227N	NITRILE	-30° C TO 100° C
895V/B700FXX	ORB134VR	5005-173	5005-172	5005-156	VITON	-20° C TO 200° C
ASSEMBLY PART NUMBER	BS134 'O'RING PART NUMBER (Index 1)	BS217 'O'RING PART NUMBER (Index 2)	BS223 'O'RING PART NUMBER (Index 3)	BS227 'O'RING PART NUMBER (Index 4)	'O' RING MATERIAL	TEMPERATURE RANGE

**FORT VALE**  
 ENGLAND, USA, CHINA  
 NETHERLANDS, SINGAPORE  
 © FORT VALE ENGINEERING LTD 2023.  
 SALES@FORTVALE.COM WWW.FORTVALE.COM  
 DO NOT SCALE - IF IN DOUBT ASK

UNLESS OTHERWISE STATED  
 SURFACE FINISH 3.2um MAX  
 CORNER RADII 0.8  
 CORNER CHAMFER 1.0 X 45°  
 REMOVE ALL BURRS AND SHARP EDGES

ISO9001:2015 REGISTERED FIRM: LRQ4007111

2" BSP / 70mm HOSE UNIT  
 70mm HOSE UNIT  
**895X/B700FXX**

CHECKED DWN: 37712  
 SHEET 1 OF 1  
 DRAWN BY: SG DATE: 04-Jan-23  
 DRG. NO.