

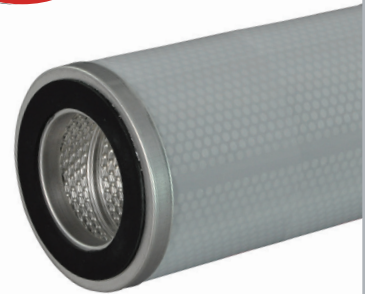
PECO Series S-SH

XTREAMPHASE®

SYNTHETIC SCREEN STYLE

LIQUID/LIQUID PHASE SEPARATORS

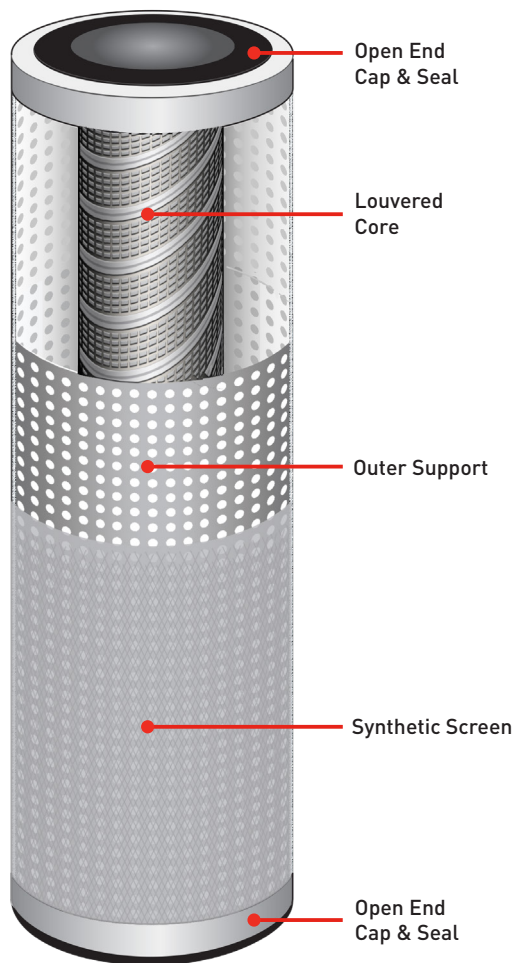
for use in the PECO Series 110V & 110H XtreamPhase® vessel or competitor vessels of similar design



Series S separator cartridges are used in conjunction with Series C and IPC coalescer cartridges in vertical and horizontal PECO Series 110 vessels. They can also be used as a retrofit to other competitor equivalents. The synthetic mesh media is hydrophobic and the cartridge

acts as a final check to repel coalesced water droplets and prevent them from going downstream.

The Series S synthetic separator is cleanable and reusable. It is a more cost effective option to Teflon® separators.



HAVING AN UNWANTED IMMISCIBLE FLUID IN A PRODUCT STREAM CAN BE COSTLY.

Don't let it create maintenance issues on equipment and cause product to be off-spec. PECO coalescing and separation technologies provide solutions to improve our customers operating costs and improve product quality. Our cartridges are designed to separate two phase liquid stream and remove the unwanted free, immiscible, dispersed droplets from the continuous fluid stream.

The word coalescence means "to grow". The coalescer media chemistry creates an affinity to attract the small immiscible liquid droplets (discontinuous phase) suspended in a fluid (continuous phase). As the small droplets are attracted they collide with each other allowing them to grow into larger droplets. The larger droplets are carried through the coalescing media and separated from the continuous fluid stream by gravity.

The coalescer cartridge can be used in conjunction with a separator cartridge when removing aqueous contaminants. The separator cartridge contains a hydrophobic media which acts as a barrier to repel coalesced aqueous droplets from the continuous, purified liquid stream.

MATERIALS

MEDIA	Hydrophobic Synthetic Mesh
CORE	Aluminum
OUTER SUPPORT	Powder Coated Epoxy
END CAPS	Aluminum
SEAL	Buna-N, Viton®
ADHESIVE	Urethane

NOMINAL DIMENSIONS

SIZE	O.D.	I.D.	LENGTH
611	6" / 152mm	3.5" / 89mm	11.25" / 287mm
614	6" / 152mm	3.5" / 89mm	14.50" / 368mm
616	6" / 152mm	3.5" / 89mm	16.25" / 413mm
622	6" / 152mm	3.5" / 89mm	22.25" / 565mm
629	6" / 152mm	3.5" / 89mm	28.75" / 730mm
632	6" / 152mm	3.5" / 89mm	33.25" / 819mm
633	6" / 152mm	3.5" / 89mm	33.25" / 845mm
636	6" / 152mm	3.5" / 89mm	36.00" / 914mm
644	6" / 152mm	3.5" / 89mm	44.00" / 1118mm

PERFORMANCE

MICRON RATING: 50 (mesh)

OPERATING DATA

FLOW DIRECTION: Outside-to-Inside

MAX TEMP: 240°F / 116°C

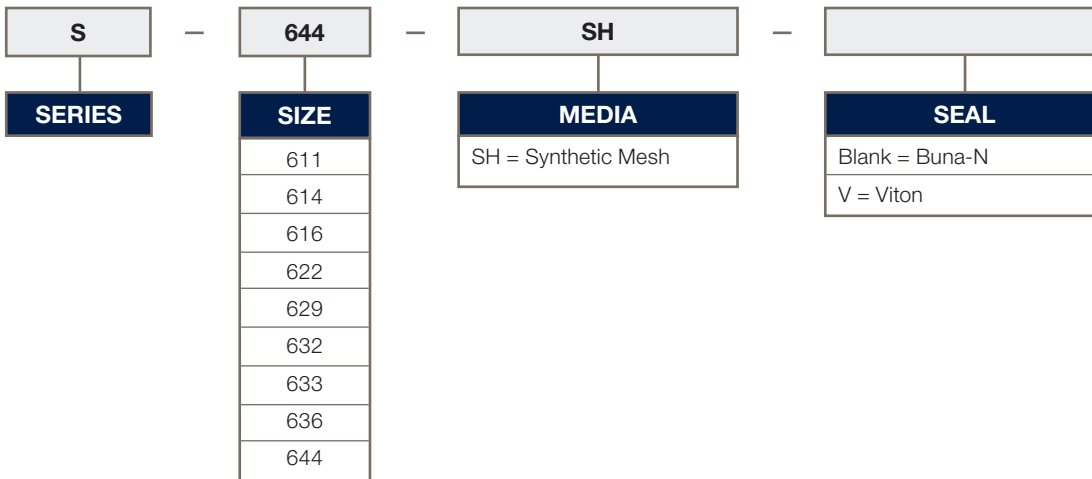
MAX. DIFFERENTIAL PRESSURE: 25 psid / 1.7 bar

RECOMMENDED CHANGE-OUT

DIFFERENTIAL PRESSURE: 15 psid / 1.0 bar

PH RANGE: 5 – 9

ORDERING INFORMATION



• Teflon® and Viton® are registered trademarks of E. I. du Pont de Numours and Company.

© 2019 Parker Hannifin Corporation
DS-OG-XTREAMPHASE-S(SH)190702



Parker Hannifin Corporation
Industrial Process Filtration Division
 Phone 940-325-2575 | Toll Free 1-800-877-7326
 Email IPF_AM_TechSupport@parker.com
 www.parker.com/ipf