

Original Directflo® Technology

DF250 METAL PUMPS

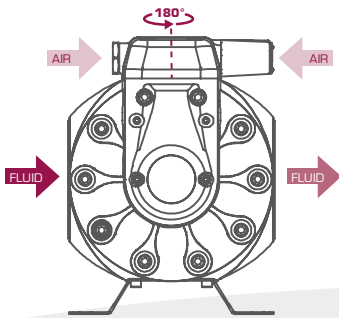
High flow air operated double diaphragm pumps for dosing, spraying, transferring, evacuating and distributing a wide variety of fluids.

Ideal for standard applications with high flow rates.

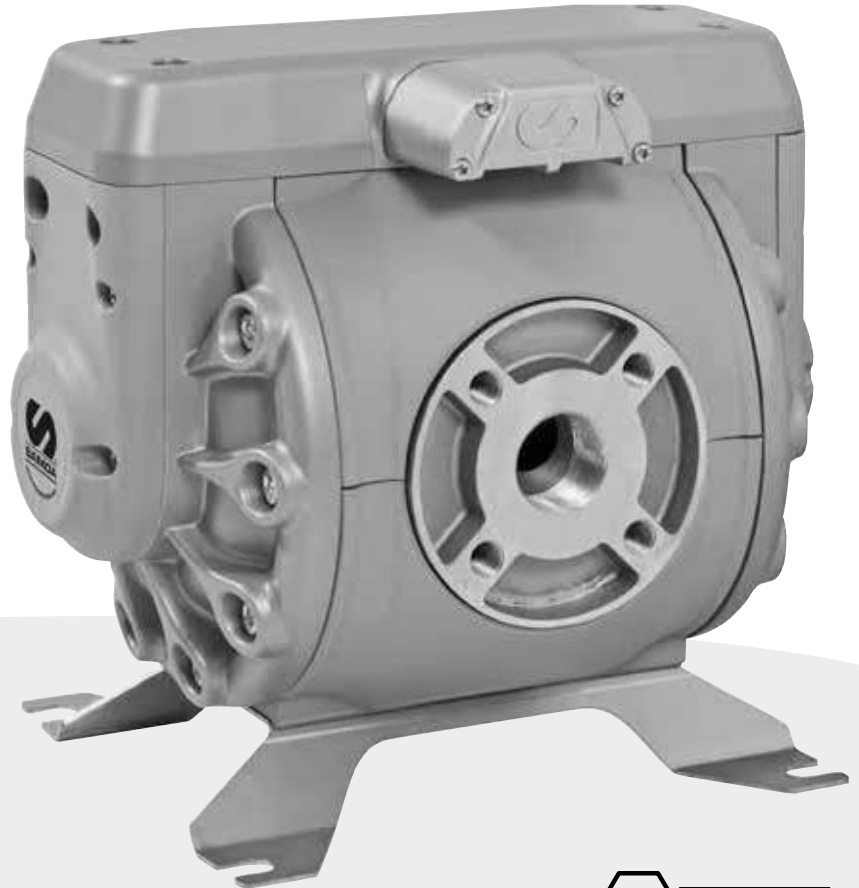
Very robust metal pumps designed for the toughest applications.

Fully groundable ATEX certified pumps for use in potentially explosive atmospheres (Ex II2 GD IIB/ IIC 95 °C).



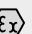
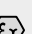
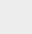
1 1/2"
250 l/min
66 US gal/min



Orientable air inlet, increased installation flexibility.



RECOMMENDED MODELS

MODEL	PUMP BODY	DIAPHRAGMS	BALLS	SEATS	OTHER WETTED MATERIALS	RECOMMENDED APPLICATIONS
DF250AASNSNBAS	Aluminium	Buna-N	Buna-N	Stainless Steel	-	ATEX pump. Coolant, new and waste oil, cutting fluids, diesel. 
DF250AASVSTHBAS	Aluminium	TPE	PTFE	Stainless Steel	FKM	ATEX pump. Coolant fluids, oil, water and Ph neutral aqueous solutions, bilge water, hydraulic fluids. 
DF250AAESESTMBAS	Aluminium	Santoprene®	PTFE	Stainless Steel	EPDM	ATEX pump. Water based flexo and gravure inks and paint. Some types of glue. 
DF250AASTSTTBAS	Aluminium	PTFE	PTFE	Stainless Steel	-	ATEX pump. Chemicals compatible with stainless steel and aluminium. Solvents (ketones, acetates and aldehydes, aliphatic and aromatic hydrocarbons) and solvent based paint, inks and varnishes. NOT FOR CHLORINATED HYDROCARBON SOLVENTS. 
DF250AASTSSTBAS	Aluminium	PTFE	Stainless Steel	Stainless Steel	-	ATEX pump. Chemicals compatible with stainless steel and aluminium. Solvents (ketones, acetates and aldehydes, aliphatic and aromatic hydrocarbons) and solvent based paint, inks and varnishes. Stainless steel balls allow its use with higher viscosity fluids. NOT FOR CHLORINATED HYDROCARBON SOLVENTS. 

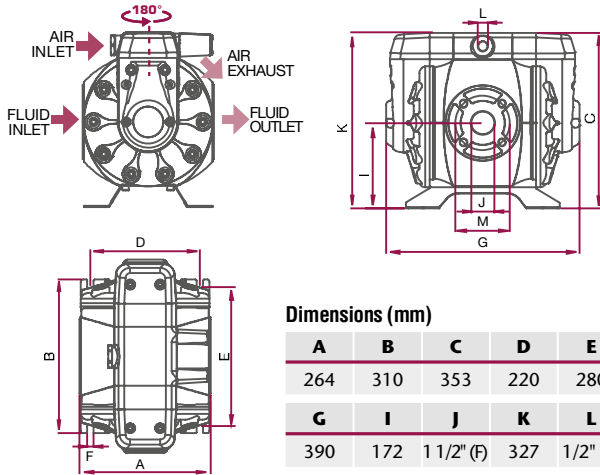
WARNING: DO NOT USE aluminium body pumps with halogenated hydrocarbon solvents.

DF250 METAL PUMPS

TECHNICAL DATA

Pressure ratio	1:1
Maximum free delivery (1)	250 l/min (66 US gal/min)
Delivery per stroke approx. (1)	0,6 litres (0.16 US gal)
Delivery per cycle (2 x strokes) (1)	1,2 litres (0.32 US gal)
Air pressure operating range	1,5 to 8 bar (22 to 115 psi)
Solids in suspension max. size	6 mm (1/4")
Maximum dry suction lift (1)	5 m (16')
Maximum wet suction lift (1)	8 m (26')
Weight	20 kg (45 lb)
Fluid inlet connection	1 1/2" BSP (F) and DIN PN-10 DN40 flange or 1 1/2" NPT (F) and ANSI 1" B16.5 150 lb flange
Fluid outlet connection	1 1/2" BSP (F) and DIN PN-10 DN40 flange or 1 1/2" NPT (F) and ANSI 1" B16.5 150 lb flange
Air inlet connection	1/2" NPSM (F)
Wetted part materials	See recommended models

(1) Data measured with water, air inlet pressure 7 bar (100 psi), 20 °C (68 °F).



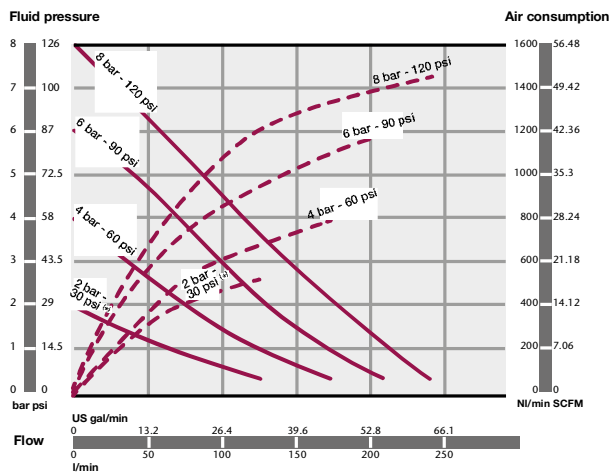
Dimensions (mm)

A	B	C	D	E	F*
264	310	353	220	280	13
G	I	J	K	L	M
390	172	11 1/2" (F)	327	1/2" (F)	110**

* Diameter of the holes for fasteners in each of the four pump feet.
 ** DIN PN-10 flange connection: 4 bolts - M 16 (110 mm between centres).
 *** ANSI B16.5 150 lb flange connection: 4 bolts - UNC 1/2" - 13 (98,4 mm between centres).

PERFORMANCE CURVES

Tested at room temperature, with water and flooded pump with 800 mm (31 1/2") height of water above the pump inlet.



— Outlet pressure
 - - - Air consumption

(*) 2 bar test with a pump fitted with TPE (Hytrel®) diaphragms.

DF250 METAL PUMP CODING SYSTEM

1	2	3	4	5	6	7	8	9	10
DF250	A	A	S	N	S	N	N	B	AS

1 PUMP SIZE
 DF250

2 AIR MOTOR: DIRECTIONAL VALVE & AIR CHAMBER COVERS
 A = Aluminium

3 WETTED PUMP BODY
 A = Aluminium

4 PUSH ROD
 S = Stainless Steel AISI 420

5 SEALS
 N = Buna-N
 V = FKM (Viton®)
 E = EPDM
 T = PTFE (Teflon®)

6 CHECK VALVE SEATS
 S = Stainless Steel AISI 316

7 CHECK VALVE BALLS
 T = PTFE (Teflon®)
 N = Buna-N
 S = Stainless Steel AISI 316
 C = Acetal

8 DIAPHRAGMS
 T = PTFE (Teflon®)
 N = Buna-N
 H = TPE (Hytrel®)
 M = Santoprene®

9 FLUID CONNECTION THREADS
 B = BSP
 N = NPT

10 OPTIONS
 AS = Standard pump
 BS = Remote air exhaust *
 DS = Stroke sensor
 FS = Extra muffler

* Included in all DF250 pumps

