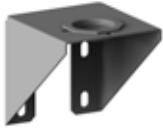
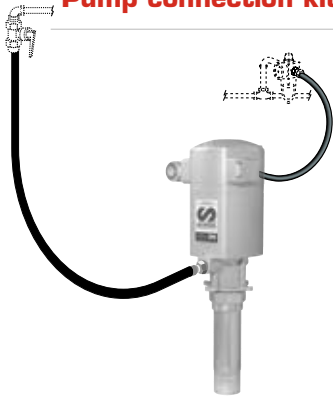


Wall brackets



360 139	Wall bracket, bung mount pump (2" F)
360 140	Wall bracket, flange mount pump (4 x M8).

Pump connection kit



539 805	PM35 pump connection kit Includes 1 m x 3/8" air hose (247 710) with elbow (239 350), quick air coupling (253 138), air nipple (259 038) and 1,5 m x 1/2" oil hose (362 101) with swivel elbow (945 736).
----------------	--

Suction Assemblies and suction hoses Suction assemblies for wall mounted stub pumps. Assemblies include Ø 42 suction tube with foot valve, height adjustable 2" bung adaptor and 2 m x 3/4" rubber connection hose.



367 006	Suction assembly for 1.000 litre IBC and 205 litre drums. 1,060 mm suction tube.
362 400	1 m x 1" connection hose. For connecting a PM35 pump to tank 1" BSP (M) connection on one side, with a 1" BSP (M) - 90° connection on the other side.
945 555	1" BSP (MM) connection adaptor. Required for connecting the suction assemblies to a PM35 - 8:1 pump.
945 681	1" BSP (M) - 1 1/2" BSP (M) connection adaptor. Required for connecting the suction assemblies to a PM35 - 5:1 pump.

Adjustable safety relief valves



Adjustable safety relief valves for pneumatic pumps to limit the overpressure in the fluid line, generated, for instance, by the thermal expansion of the fluid confined in the piping. Made out of zinc-plated steel, they are regulated by means of an Allen screw located on the side of the valve.

609 013	Adjustable safety relief valve. 20 - 30 bar (290 - 435 psi). 1/4" BSP (M) - M10 x 1.25.
609 014	Adjustable safety relief valve. 10 - 20 bar (145 - 290 psi). 1/4" BSP (M) - M10 x 1.25.
609 015	Adjustable safety relief valve. 30 - 50 bar (435 - 725 psi). 1/4" BSP (M) - M10 x 1.25.

Pressure relief valve For protection against over-pressure caused by oil thermal expansion (1 °C increase in temperature can cause 10 bar increase in system pressure). SAMOA pumps include a 1/4" plug that can be removed and replaced with a pressure relief valve.



609 007	5:1 Pressure relief valve opens at approx. 60 bar. Possibility to connect either a 1/4" hose with a clamp or a hose with 1/8" BSP (F) fitting as oil return line.
609 008	8:1 Pressure relief valve. Same as 609 007 but for 100 bar.

Autostop valve, 1/2" BSP (F)



609 016	Shuts off air to the pump when lubricant drum/tank is empty or when the line is broken.
----------------	---