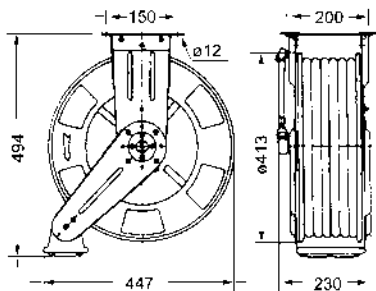


RM-12SS Double Arm Hose Reel in Stainless Steel

Multi-application hose reels made of stainless steel (AISI 304) for use in corrosive environments, outdoors and in the food industry (air and water). With double arm support structure, the arms are orientable to achieve optimum performance in any mounting position: wall, ceiling or floor mounted.

Features:

- Large hose capacity up to 20 m (maximum Ø 3/8").
- For use with air and water at low or high pressure.
- All hoses are provided with crimped terminals.



MODELS

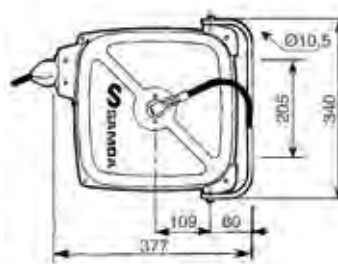
Part No.	Hose in Ø (IN - EXT)	Hose length	Connecting hose inlet	Connecting hose outlet	Pressure rating	Hose type
503 120	1/2" (12,5 mm)	20 m	1/2" BSP (M)	1/2" BSP (M)	10 bar	Food-grade rubber
503 400	3/8" (10 mm)	20 m	3/8" BSP (M)	3/8" BSP (F)	250 bar	Food-grade rubber

RM-38 Compact Reels for Air

Compact enclosed reels with 12 and 15 meters maximum hose capacity. Reels for compressed air or nitrogen manufactured in steel. All reels include pivoting wall bracket for an easy and convenient installation. Reels are supplied with PVC hose and they have a maximum working pressure of 15 bar (218 psi).



500 115



MODELS

Part No.	Hose in Ø (IN - EXT)	Hose length	Connecting hose inlet	Connecting hose outlet	Pressure rating	Hose type
500 115	5/16" (8 mm)	15 m	3/8" BSP (M)	1/4" BSP (M)	15 bar	PVC
500 116	3/8" (10 mm)	12 m	3/8" BSP (M)	3/8" BSP (M)	15 bar	PVC