

412 103

GREASE HOSES



Manufactured in NBR with a high density steel reinforcement braid. With two swaged nuts and male-male adaptors on both ends.

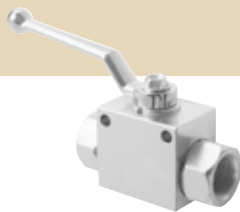
- 412 101**, 1 m x 1/4". Working pressure: 400 bar. Connection threads: 1/4" BSP (MM).
- 412 190**, 1,5 m x 1/4". Working pressure: 400 bar. Connection threads: 1/4" BSP (MM).
- 412 102**, 2 m x 1/4". Working pressure: 400 bar. Connection threads: 1/4" BSP (MM).
- 412 103**, 3 m x 1/4". Working pressure: 400 bar. Connection threads: 1/4" BSP (MM).
- 412 104**, 4 m x 1/4". Working pressure: 400 bar. Connection threads: 1/4" BSP (MM).

- 412 391**, 1,5 m x 3/8". Working pressure: 330 bar. Connection threads: 1/4" - 3/8" BSP (MM).
- 412 392**, 1,5 m x 3/8". Working pressure: 330 bar. Connection threads: 3/8" - 1/2" BSP (MM).
- 412 390**, 2 m x 3/8". Working pressure: 330 bar. Connection threads: 1/4" - 3/8" BSP (MM).
- 412 393**, 3 m x 3/8". Working pressure: 330 bar. Connection threads: 1/4" - 3/8" BSP (MM).
- 412 394**, 4 m x 3/8". Working pressure: 330 bar. Connection threads: 1/4" - 3/8" BSP (MM).

- 412 202**, 1,8 m x 1/2". Working pressure: 275 bar. Connection threads: 1/2" BSP (MM).
- 412 203**, 3 m x 1/2". Working pressure: 275 bar. Connection threads: 1/2" BSP (MM).

950 304

VALVES



AIR LINE SHUTOFF VALVES

950 318	Air valve, 3/8" BSP (FF)
950 319	Air valve, 1/2" BSP (FF)

LOW AND MEDIUM PRESSURE VALVES

950 305	1/4" BSP (FF), 65 bar quarter turn valve
950 320	3/8" BSP (FF), 65 bar quarter turn valve
950 300	1/2" BSP (FF), 65 bar quarter turn valve

HIGH PRESSURE VALVES

950 304	1/2" BSP (FF), 500 bar quarter turn valve
950 328	3/4" BSP (FF), 400 bar quarter turn valve
950 329	1" BSP (FF), 350 bar quarter turn valve

GREASE PUMP MOUNTING ACCESSORIES QUICK REFERENCE CHART

PUMP	PUMPMASTER 3	PUMPMASTER 35	PUMPMASTER 45			PUMPMASTER 60 ⁽¹⁾	
RATIO	55:1	60:1	25:1	40:1	70:1	12:1	80:1
BUNG ADAPTOR	410 000	410 001	(2)	(2)	(2)	(2)	(2)
CONNECTION HOSE KIT	412 910	534 600	534 103	534 103	534 103	539 009	534 103
DRUM COVER 185 KG	418 006	418 006	418 026	418 026	418 026	N/A	418 026
DRUM COVER 50 KG	418 004	418 004	N/A	418 017	418 017	N/A	418 017
FOLLOWER PLATE 185 KG	417 004	417 004	417 009	417 009	417 009	N/A	417 009
FOLLOWER PLATE 50 KG	417 002	417 002	N/A	417 011	417 011	N/A	417 011
CAM-LOCK ADAPTOR	N/A	N/A	N/A	753 110 ⁽³⁾	753 110 ⁽³⁾	753 110 ⁽³⁾	753 110 ⁽⁴⁾
CAM-LOCK CONNECTOR	N/A	N/A	N/A	950 358	950 358	950 358	N/A
AIR REGULATOR WITH GAUGE	240 200	241 201	241 201	241 201	241 201	241 201	241 201
AIR FILTER LUBRICATOR	240 500	241 501	241 501	241 501	241 501	241 501	241 501
FRL	240 000	241 001	241 001	241 001	241 001	241 001	241 001
AIRLINE SHUTOFF VALVE	950 321	950 319	950 319	950 319	950 319	950 319	950 319
FLUID SHUTOFF VALVE	950 304	950 304	950 328	950 304	950 304	950 328	950 304
AIR QUICK COUPLER	253 114	255 338	251 412	251 412	251 412	251 412	251 412
AIR QUICK CONNECTOR	259 014	251 438	255 312	255 312	255 312	255 312	255 312
AIR CONNECTION ACCESSORIES I.D.	1/4" - 6 mm	3/8" - 9,5 mm	1/2" - 12,5 mm	1/2" - 12,5 mm	1/2" - 12,5 mm	1/2" - 12,5 mm	1/2" - 12,5 mm

(1) PM60, 12:1 pump is only available for horizontal mount on tanks, totes and grease bags.

(2) Flange mounted pumps. No bung adaptor for fixing a pump to a cover.

(3) Included in short pumps for horizontal mount on tanks, totes and grease bags. Required for vertical mount on grease tanks (long pumps).

(4) For vertical mount on grease tanks only (long pumps).