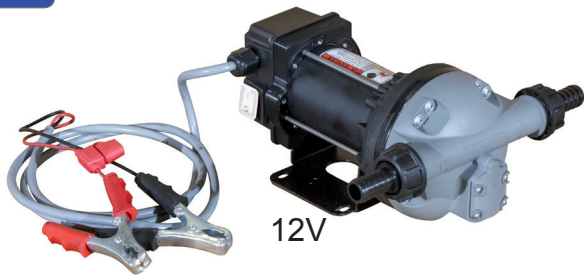




X-BLUE



WATER



12V



230V - 115V

FEATURES	12V DC	230V AC 50Hz	230V AC 60Hz	115V AC
Voltage AC [V, Hz]:	12	230, 50	230, 60	115,60
Max Current [A]:	20	1,95	1,95	3,5
Potenza [W]:	200	350	350	350
Engine protection	IP55	IP55	IP55	IP55
Switch On/Off	Yes	Yes	Yes	Yes
Cable [m]:	4	2	3	2
Ciclo di lavoro [min]:	S2 20	S2 20	S2 20	S2 20
Max Flow rate [LPM / GPM]:	36 / 9,2	34 / 9	34 / 9	34 / 9
Max pression [bar]:	1,5	1,5	1,5	1,5
Dry suction [m]:	2	2	2	2
Internal By-Pass Valve:	Yes	Yes	Yes	Yes
Internal filter [µm]:	No	No	No	No
Engine Holder:	Yes	Yes	Yes	Yes
Inlet/Outlet [BSPP]:	1" M / 1" M	1" M / 1" M	1" M / 1" M	1" M / 1" M
Seals materials:	Viton	Viton	Viton	Viton
Temperature min/max [°C]:	-5 / +40	-5 / +40	-5 / +40	-5 / +40
Allowed fluids:	AdBlue, AUS 32, Water			
Forbidden fluids:	Gas, Alcool, Gasoline, Diesel, Kerosene			
Noise at 1 m [dB]:	70	70	70	70
Net Weight [Kg]:	5	6	6	6
Gross weight [Kg]:	6	7	7	7

ACCESSORIES:

On request 4 m cable



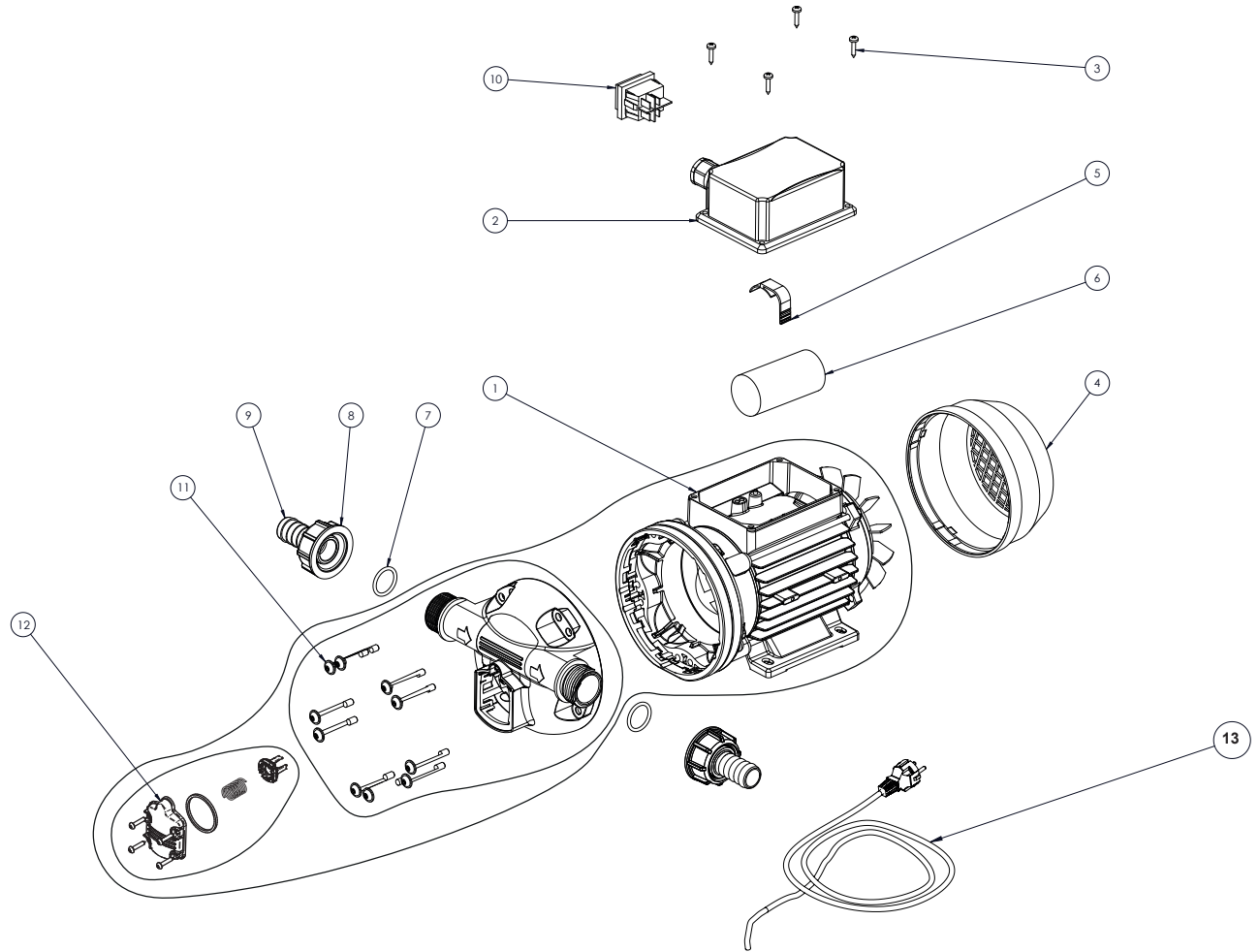
category

urea electric pump

model

X-BLUE 230V - 115V

	CODE	DESCRIPTION	Q.TY
1	AB042	diaphragm pump 230V 50Hz	1
	AB043	diaphragm pump 230V 60Hz	
	AB044	diaphragm pump 115V 60Hz	
2	PA016	Capacitor box	1
3	VT004	screw TC cross Ø3,5x16 UNI 6954	4
4	140250500000	Fan cover MEC63	1
5	140250200000	Condenser Hold Clips	1
6	190060000000	Condenser 12.5 µF 450 V	1
7	OR041	o-ring ø20	2
8	RA025	walker 1" for fitting ø20	2
9	RA026	fitting ø20 1"	2
10	EL013	on/off switch 22X30 + cap	1
11	KITTESTBYXB	repair kit head + by pass xblue	1
12	KITBYXB	by pass pump kit XBLUE	1
13	190200000000	cable + schuko plug 230V	1



Adam Pumps S.p.A.
 Soc. con Socio Unico
 via della resistenza 46/48 - 41011 Campogalliano (MO) ITALIA
 Tel +39 059 528128 - Fax +39 059 528437 | www.adampumps.com - info@adampumps.com



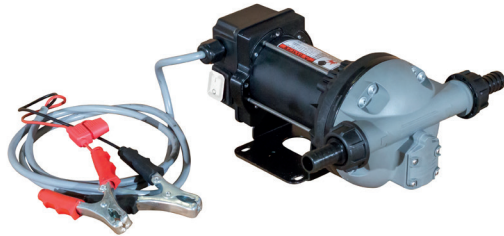
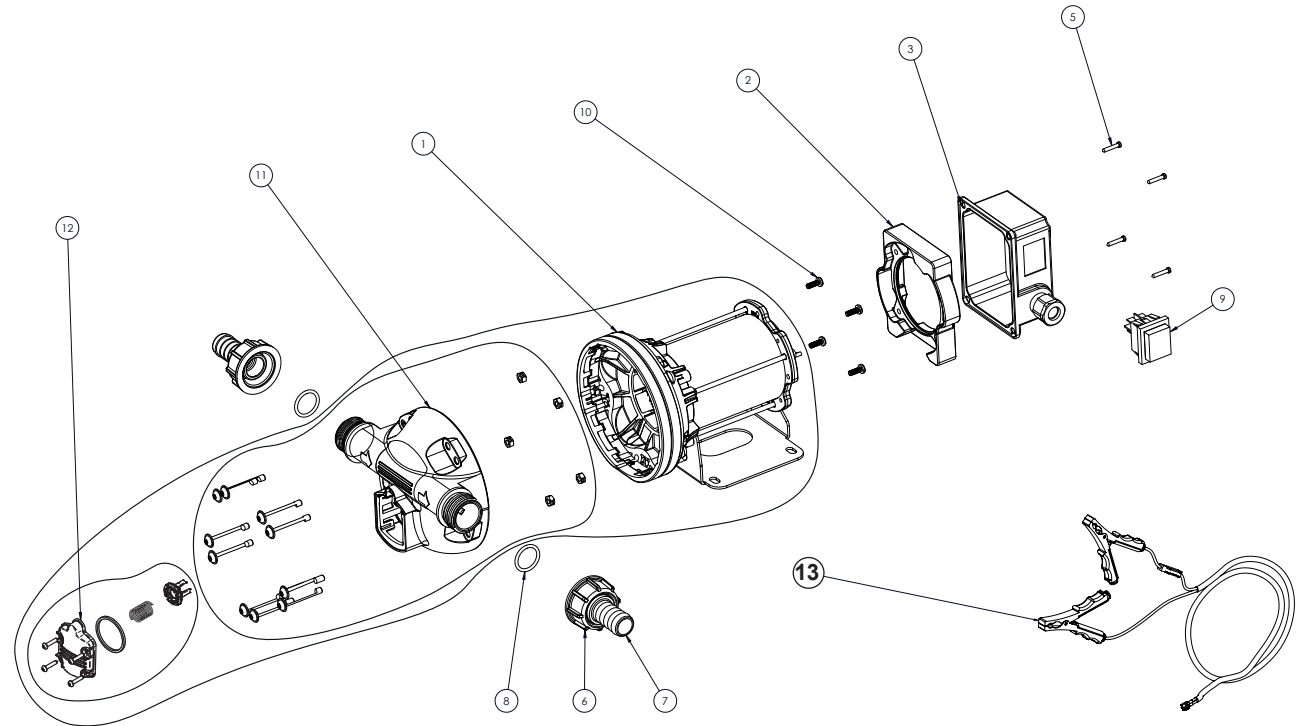
category

urea electric pump

model

X-BLUE 12V

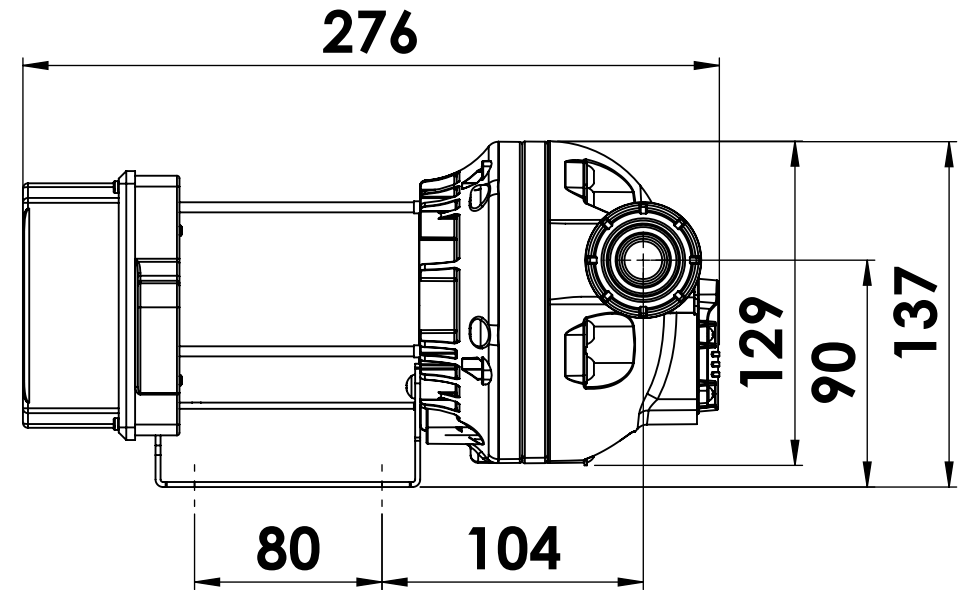
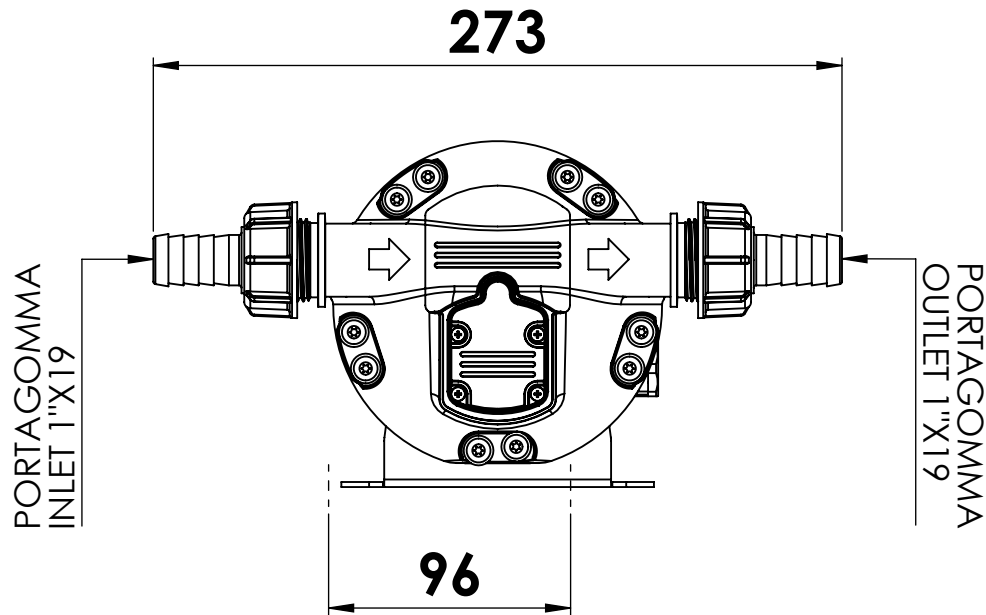
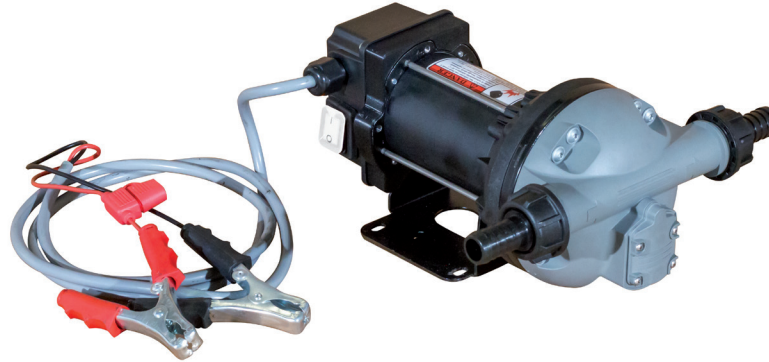
	CODE	DESCRIPTION	Q.TY
1	AB041	diaphragm pump	1
2	PA017	flange electric box	1
3	PA016	Capacitor box	1
4	EL013	on/off switch 22X30 + cap	1
5	VT004	screw TC cross Ø3,5x16 UNI 6954	4
6	RA025	walker 1" for fitting ø20	2
7	RA026	fitting ø20 1"	2
8	OR041	o-ring ø20	2
9	EL013	on/off switch 22X30 + cap	1
10	VT047	screw TC cross M4x10 UNI 8112	4
11	KITTESTBYXB	repair kit head + by pass xblue	1
12	KITBYXB	by pass pump kit XBLUE	1
13	91505270000	Clamp 20x32	1



Adam Pumps S.p.A.
 Soc. con Socio Unico
 via della resistenza 46/48 - 41011 Campogalliano (MO) ITALIA
 Tel +39 059 528128 - Fax +39 059 528437 | www.adampumps.com - info@adampumps.com



X-BLUE 12V

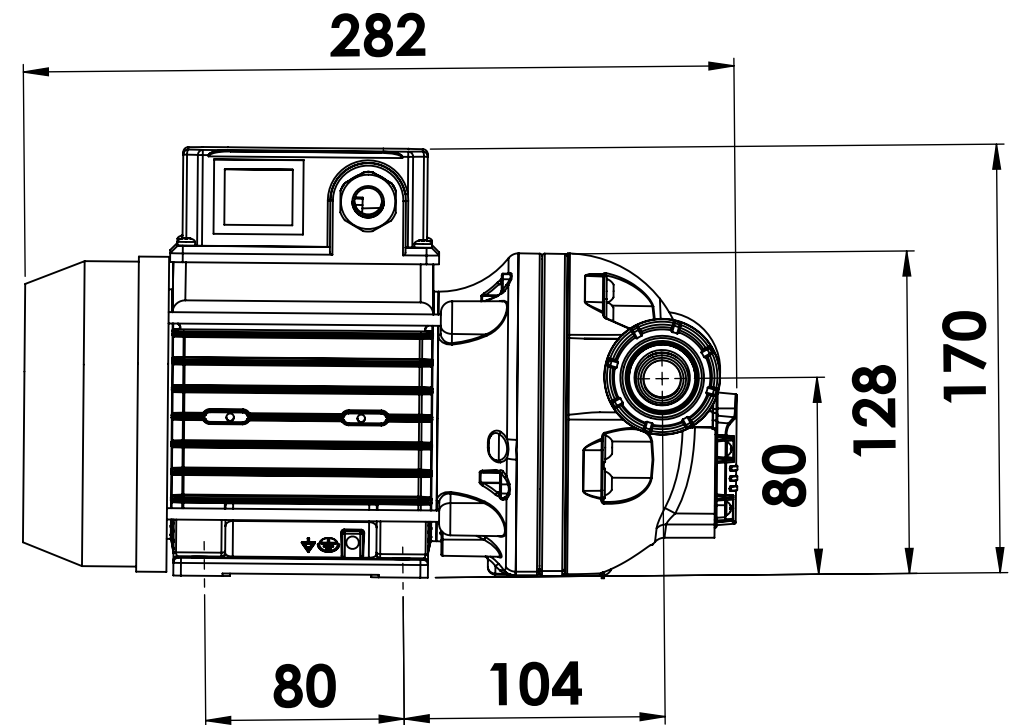
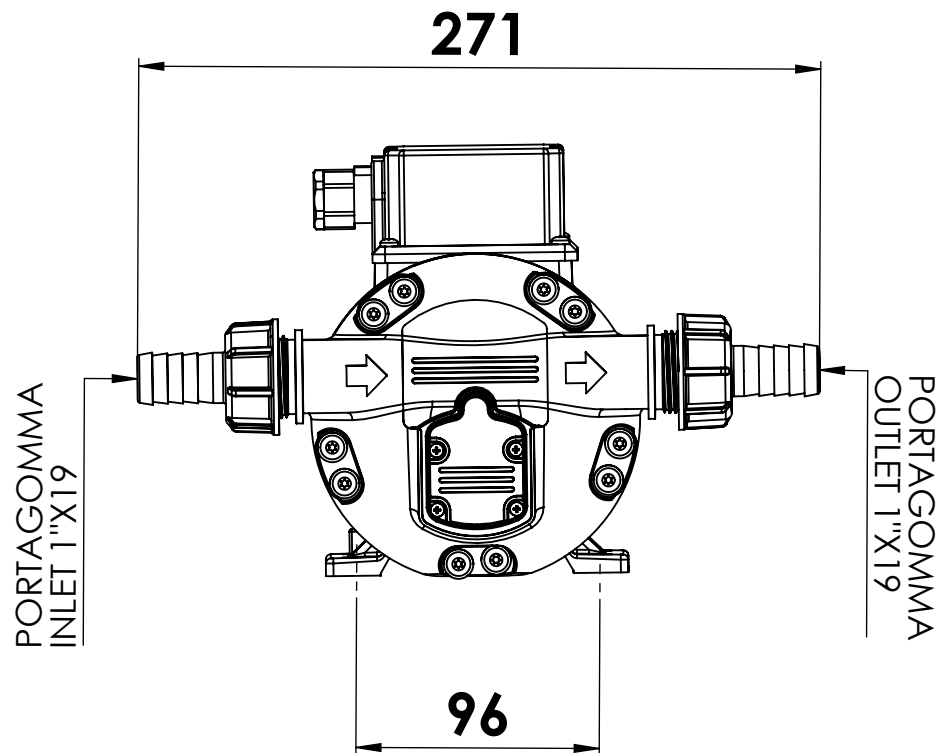


tutte le dimensioni espresse in mm - all dimensions are in mm





X-BLUE 230V

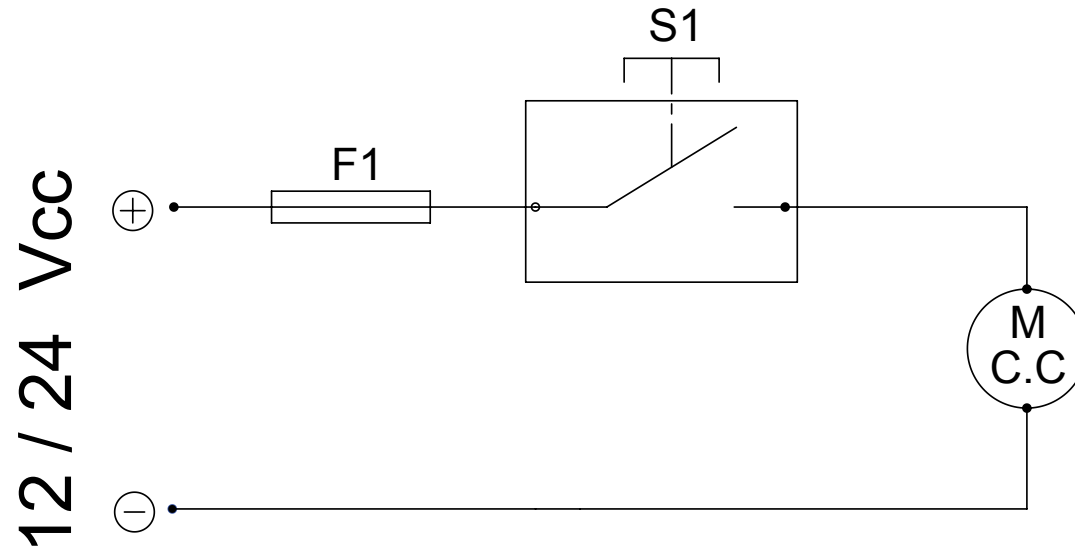
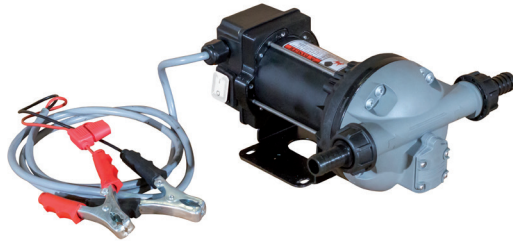


tutte le dimensioni espresse in mm - all dimensions are in mm





X-BLUE 12V



schema elettrico

wiring diagram

schaltpläne

schémas électriques

esquemas eléctricos

esquemas elétricos

электрические схемы



S1 interruttore ON-OFF
M: motore
F1: fusibile



S1: interruptor ON-OFF
M: motor
F1: fusible



S1: ON-OFF switch
F1: Fuse
M: Motor



S1: Interruptor ON-OFF
M: Motor
F1: Fusível



S1: ON - OFF Schalter
M: Motor
T: Temperaturschutz



S1: переключатель ВКЛ-ВЫКЛ
M: Двигатель
F1: Плавкий предохранитель

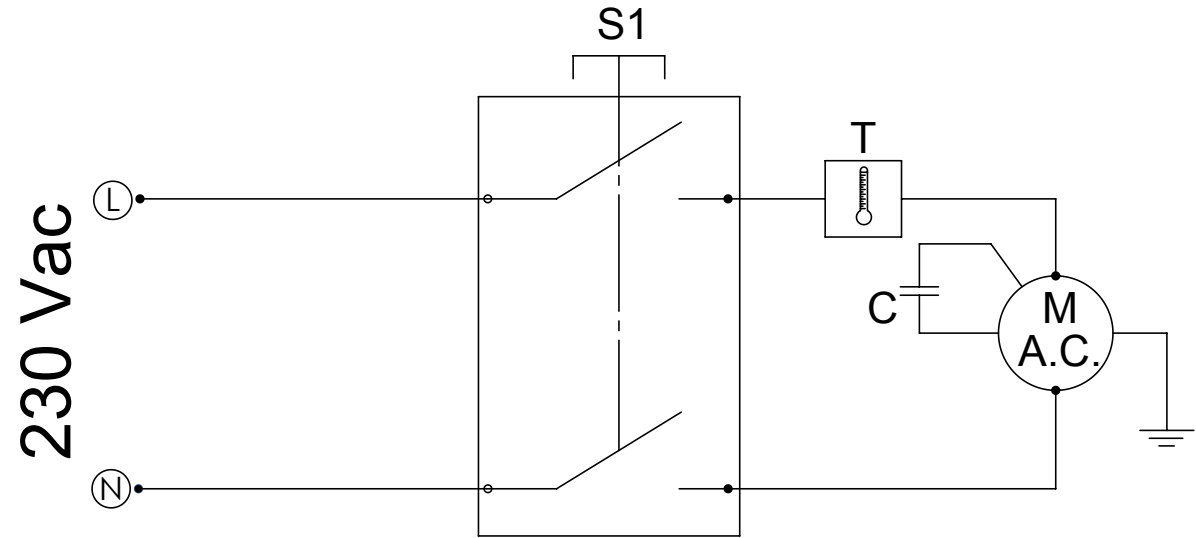


S1: interrupteur ON-OFF
M: moteur
F1: fusible





X-BLUE 230-115V



schema elettrico

wiring diagram


schaltpläne


schémas électriques


esquemas eléctricos


esquemas elétricos


электрические схемы


 S:1 interruttore ON-OFF
M: motore
T: protezione termica
C: condensatore


 S1: interruptor ON-OFF
M: motor
T: protección térmica
C: condensador

 S1: ON-OFF switch
M: Motor
T: Circuit Breaker
C: Capacitor

 S1: Interruptor ON-OFF
M: Motor
T: Proteção Térmica
C: condensador

 S1: ON - OFF Schalter
M: Motor
T: Temperaturschutz
C: Kondensator

 S1: переключатель ВКЛ-ВЫКЛ
M: Двигатель
T: Термореле
C: Конденсатор

 S1: interrupteur ON-OFF
M: moteur
T: protection Thermique
C: condensateur





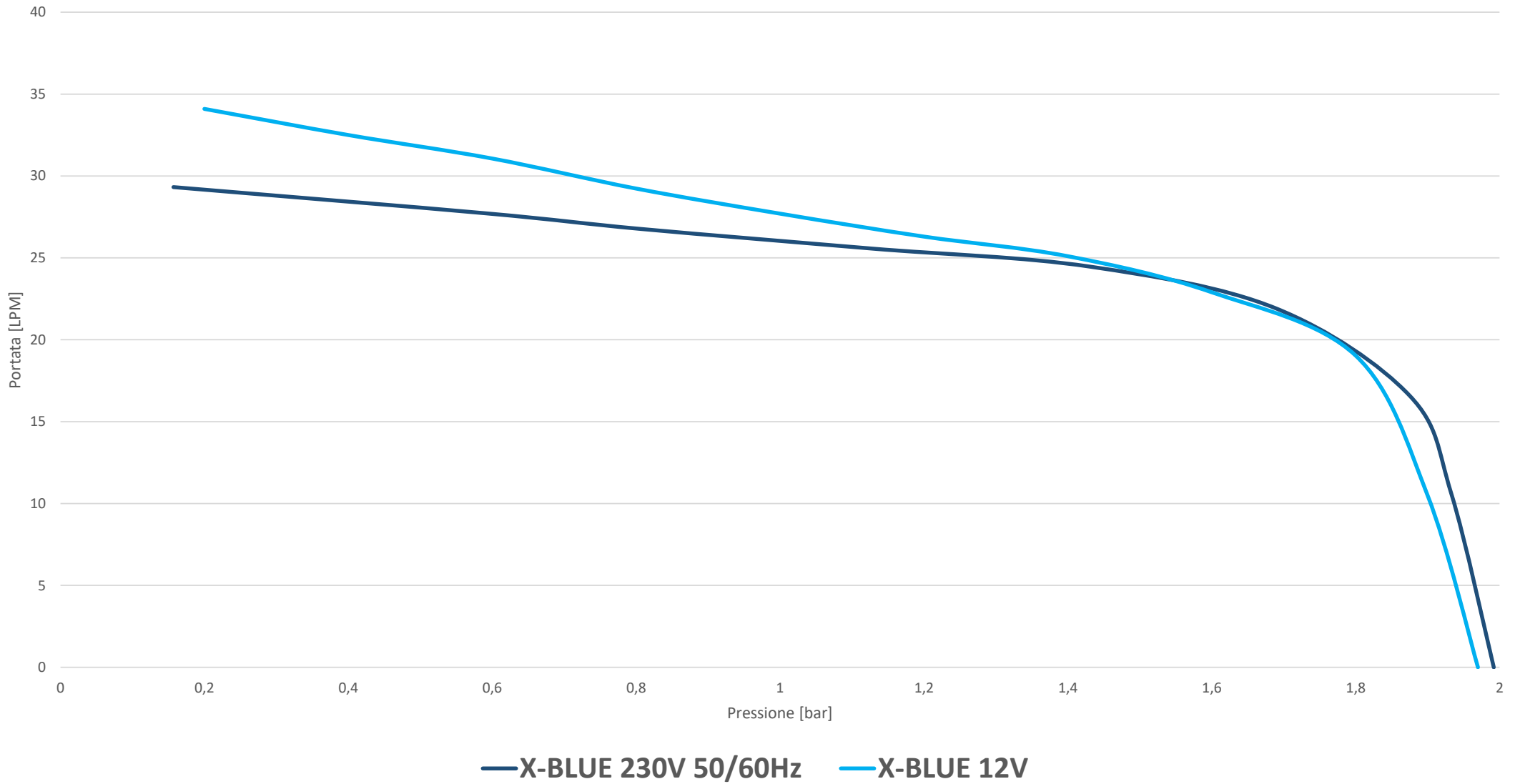
documento / document

prodotto / product

MADE IN ITALY 

curva di portata / flow rate curve

X-BLUE Pumps



— X-BLUE 230V 50/60Hz — X-BLUE 12V



Adam Pumps spa
via della Resistenza 46/48
41011 Campogalliano (MO) - ITALIA

tel. +39 059 528 128
fax +39 059 528 437
info@adampumps.com